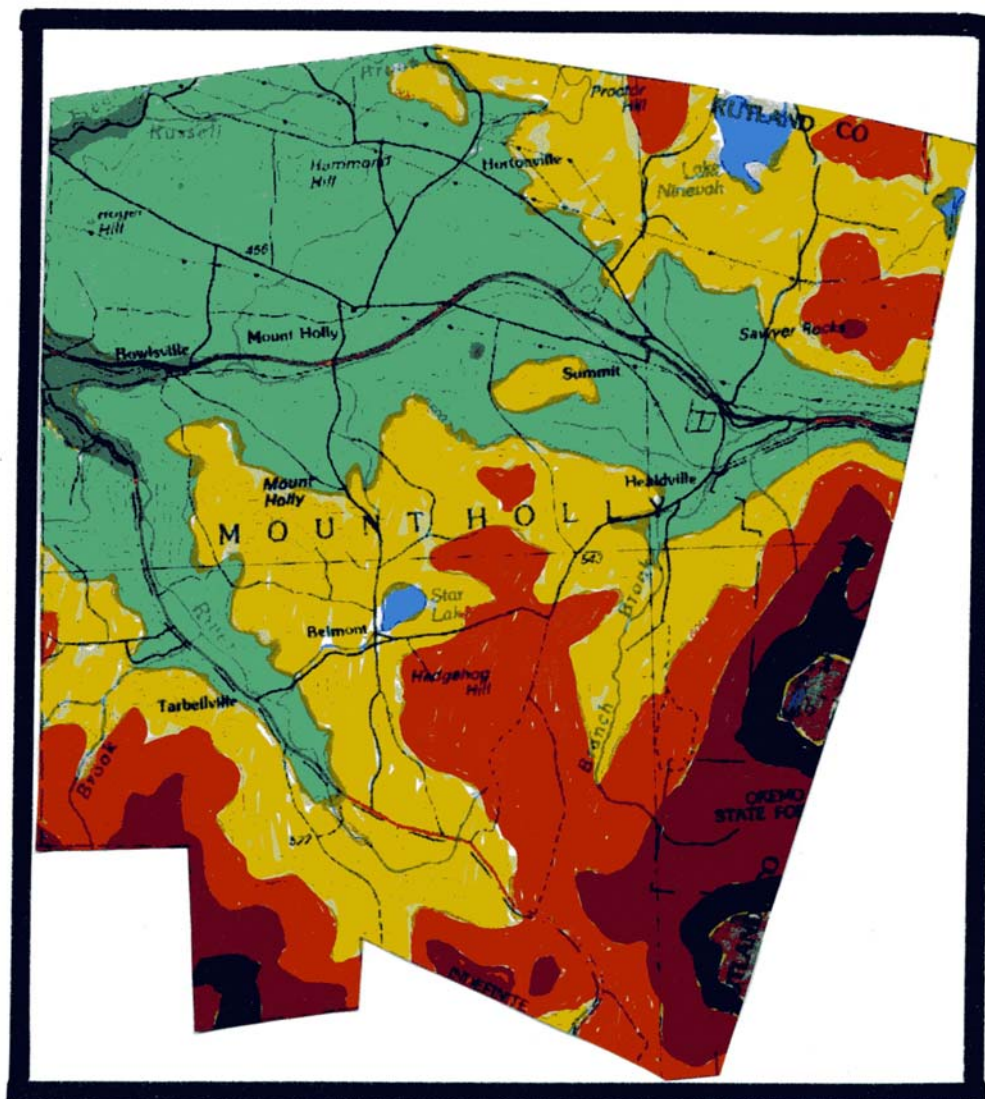


Map II a 1

CROSSING the GREEN MOUNTAINS at MOUNT HOLLY

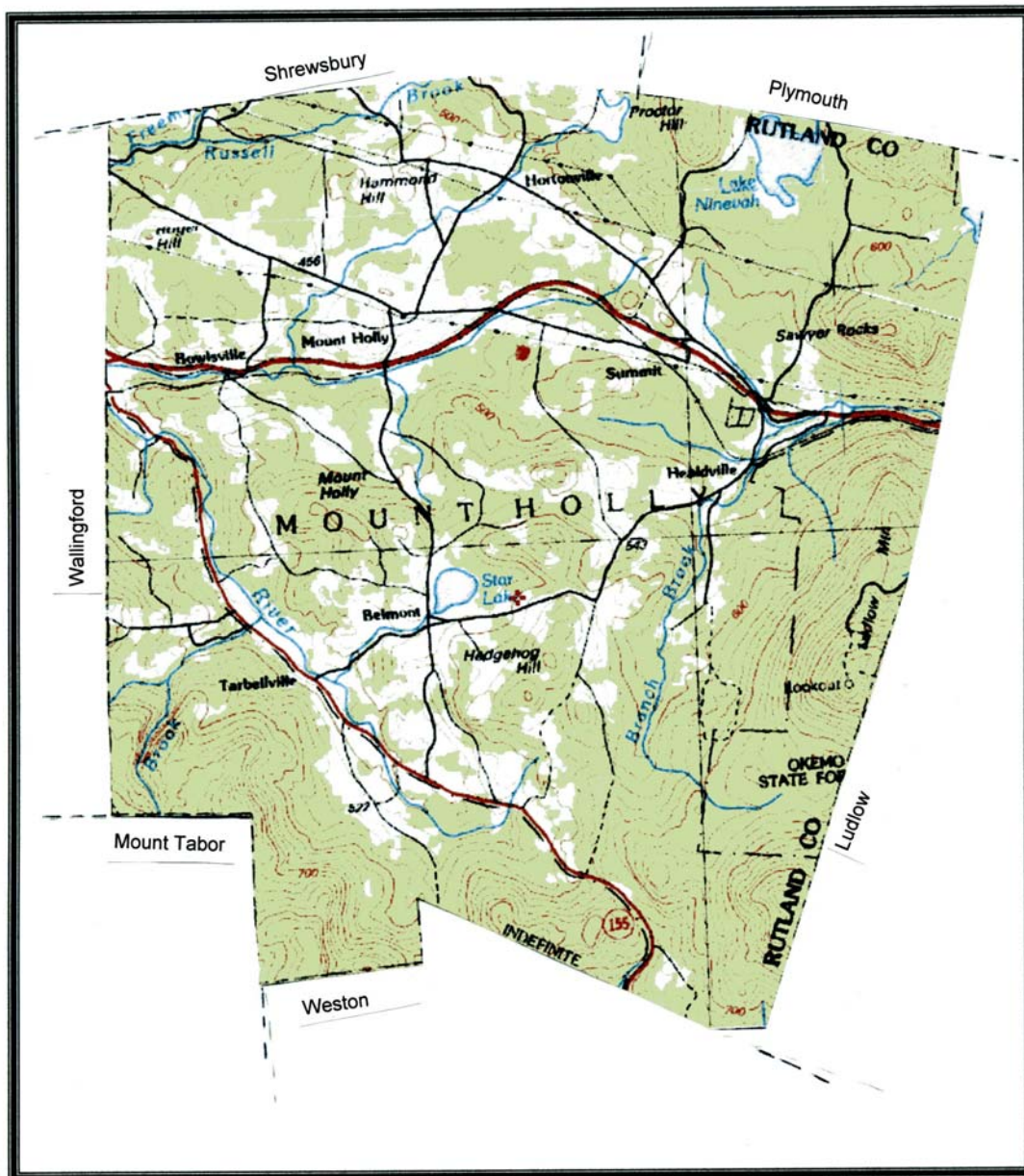


Map II a 2

**MOUNT HOLLY ELEVATION**  
Meters above sea level

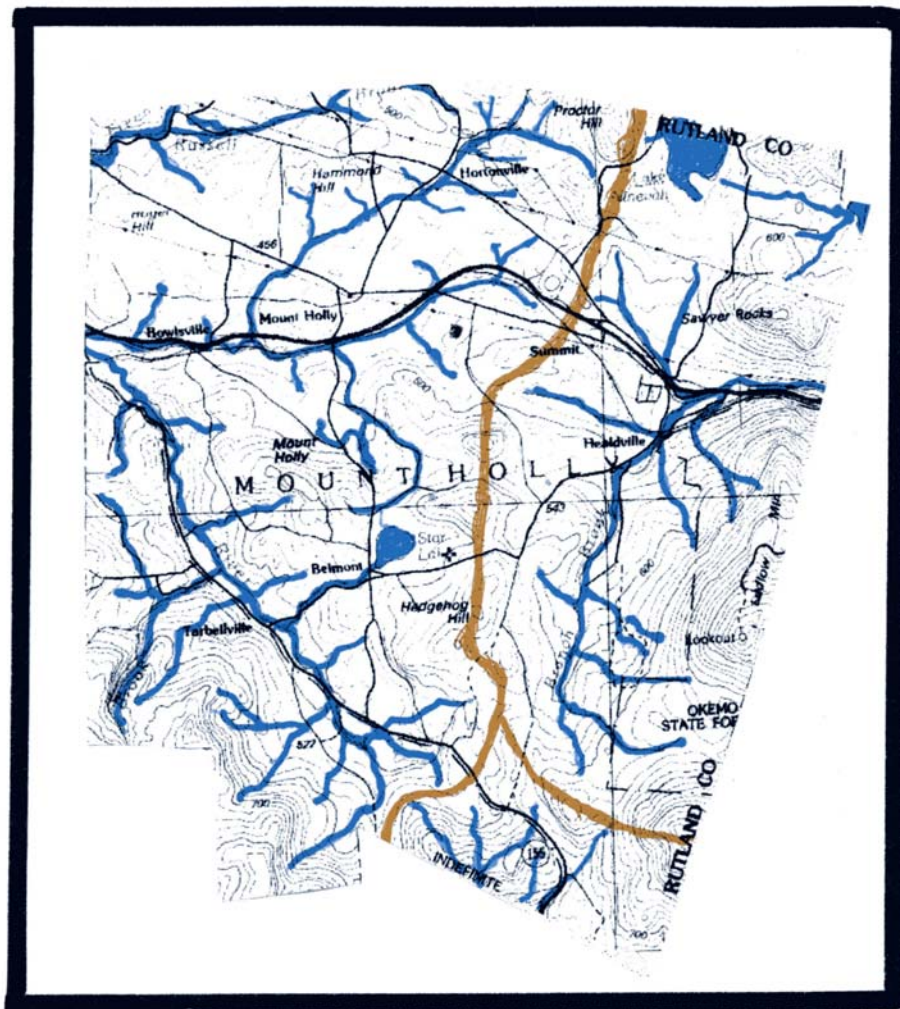






Map II a 3

## TOPOGRAPHIC MAP of MOUNT HOLLY



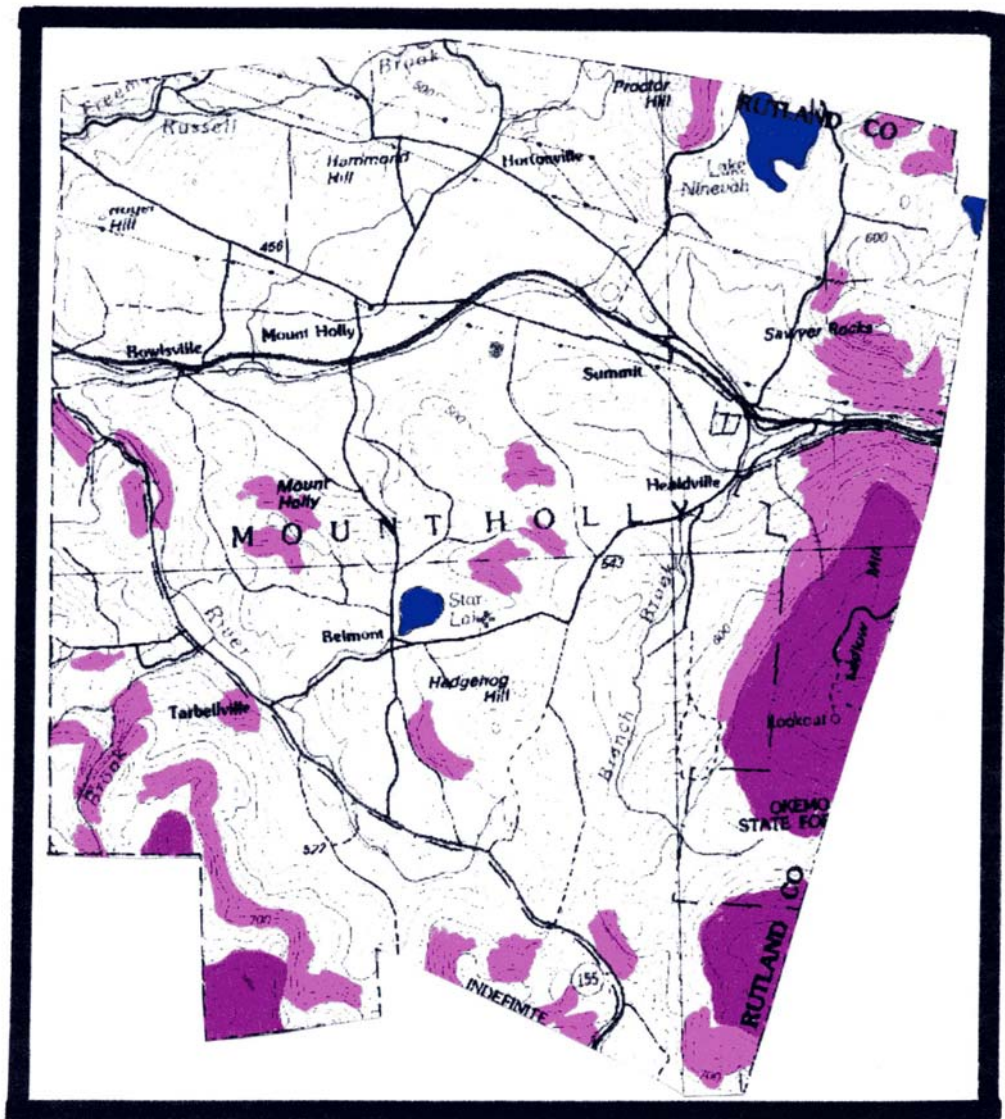
Map II a 4

### MOUNT HOLLY WATERSHEDS

#### WATERSHEDS:

North-West:	Otter Creek to Lake Champlain
East::	Black River to Connecticut River
South:	West River to Connecticut River

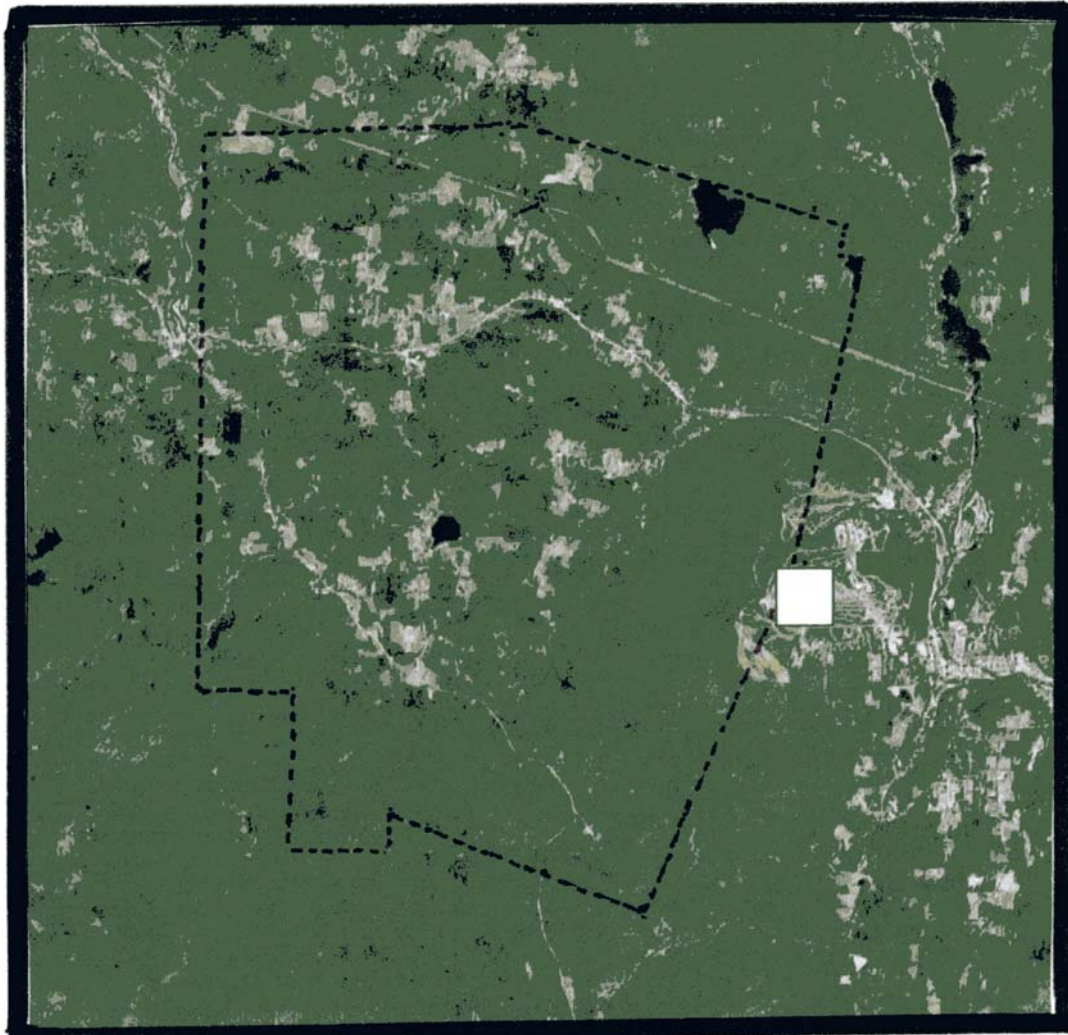




Map II a 5

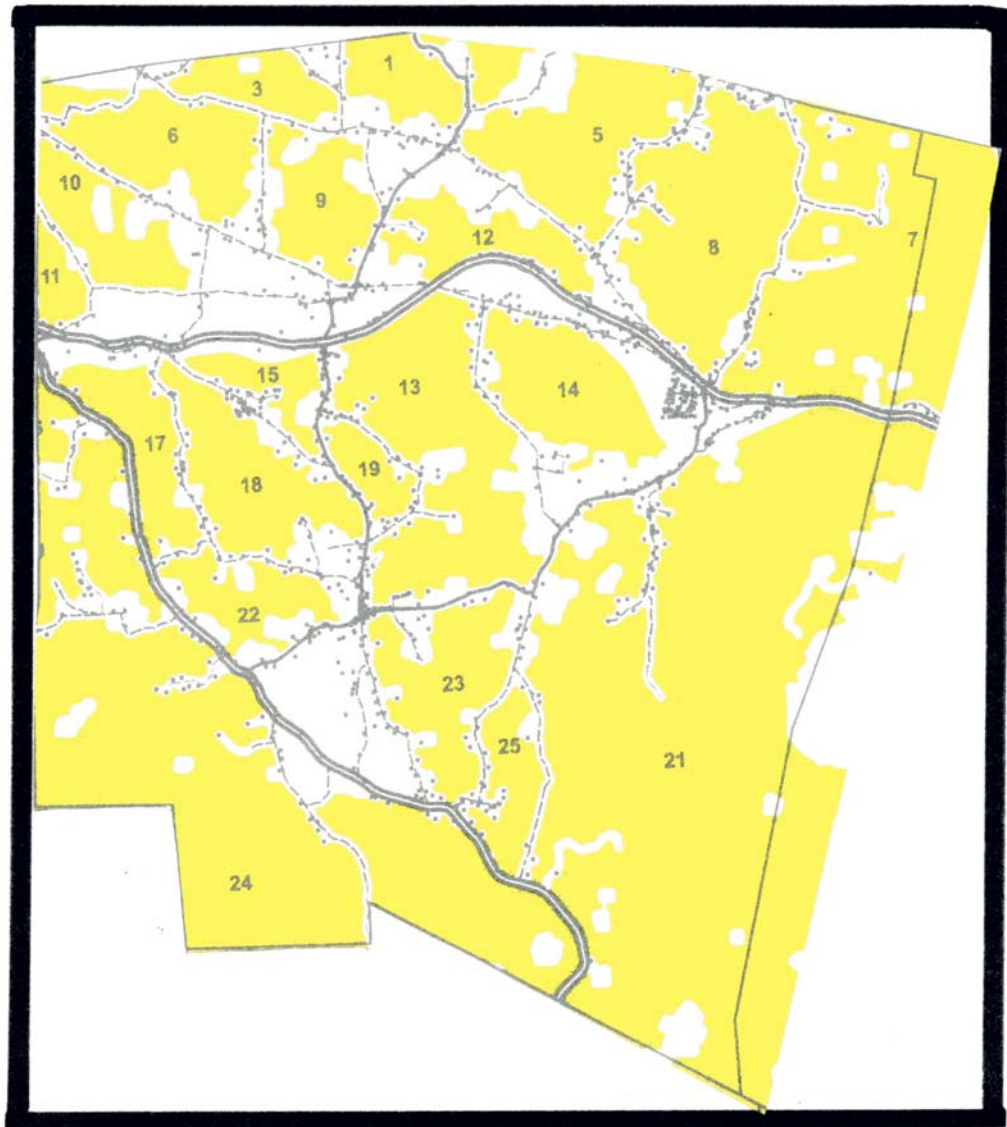
# **MOUNT HOLLY RIDGES and SLOPES**

- Ridges over 2,500 feet
- Slopes 25% +



Map II a 6

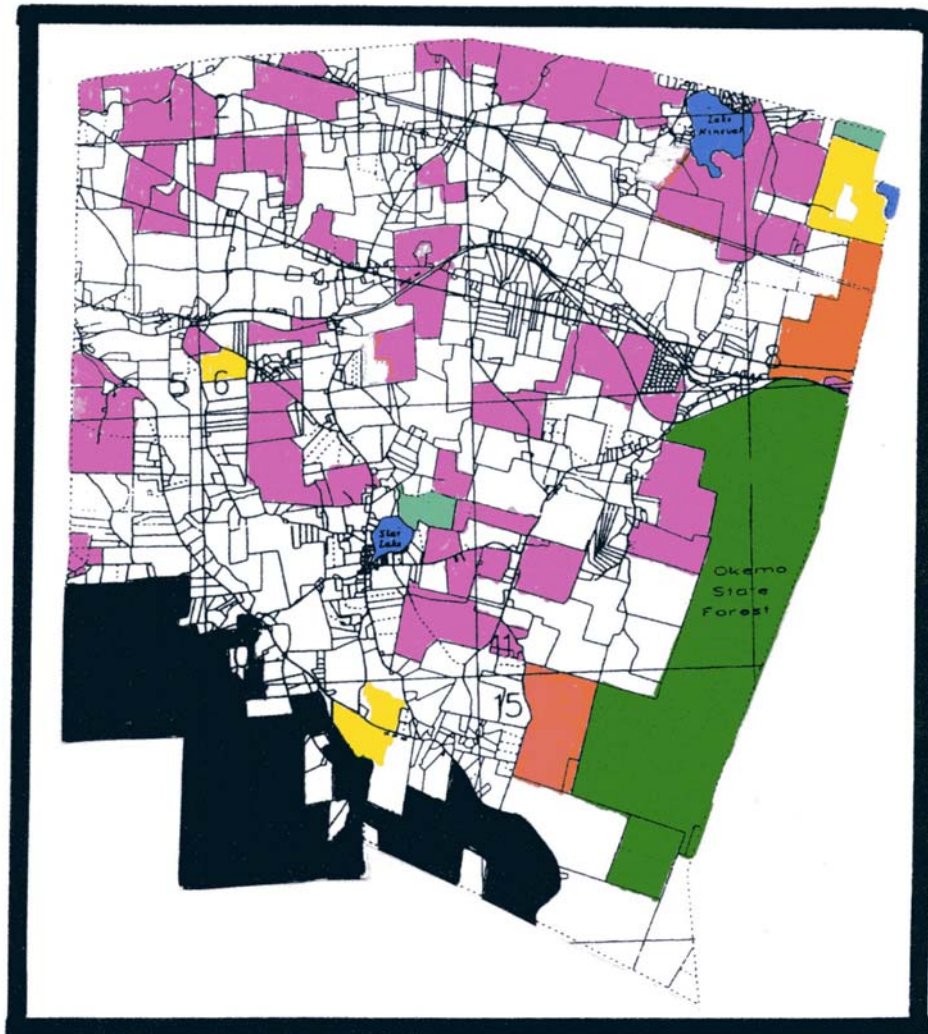
MOUNT HOLLY - AERIAL VIEW



Map II a 7







**MOUNT HOLLY CONTIGUOUS FOREST**  
*Remote sensing by Arrowwood Environmental  
for planning purposes*



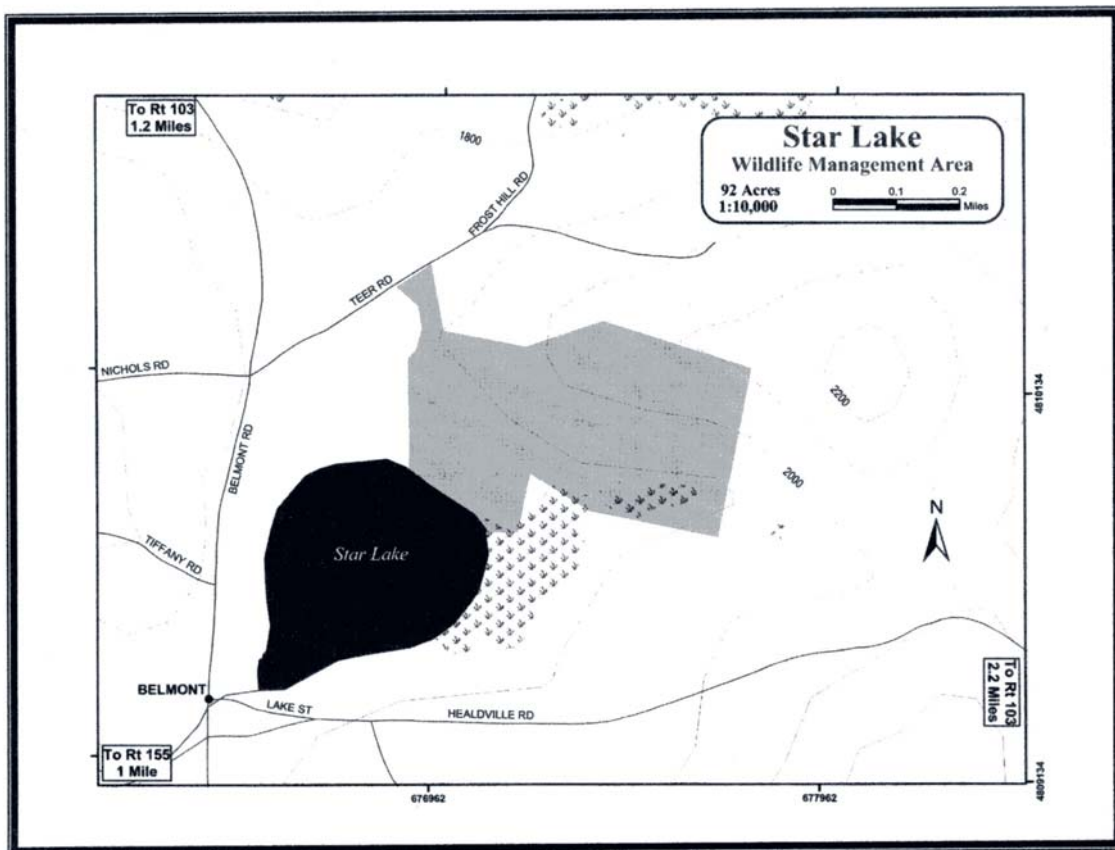


Map II a 8

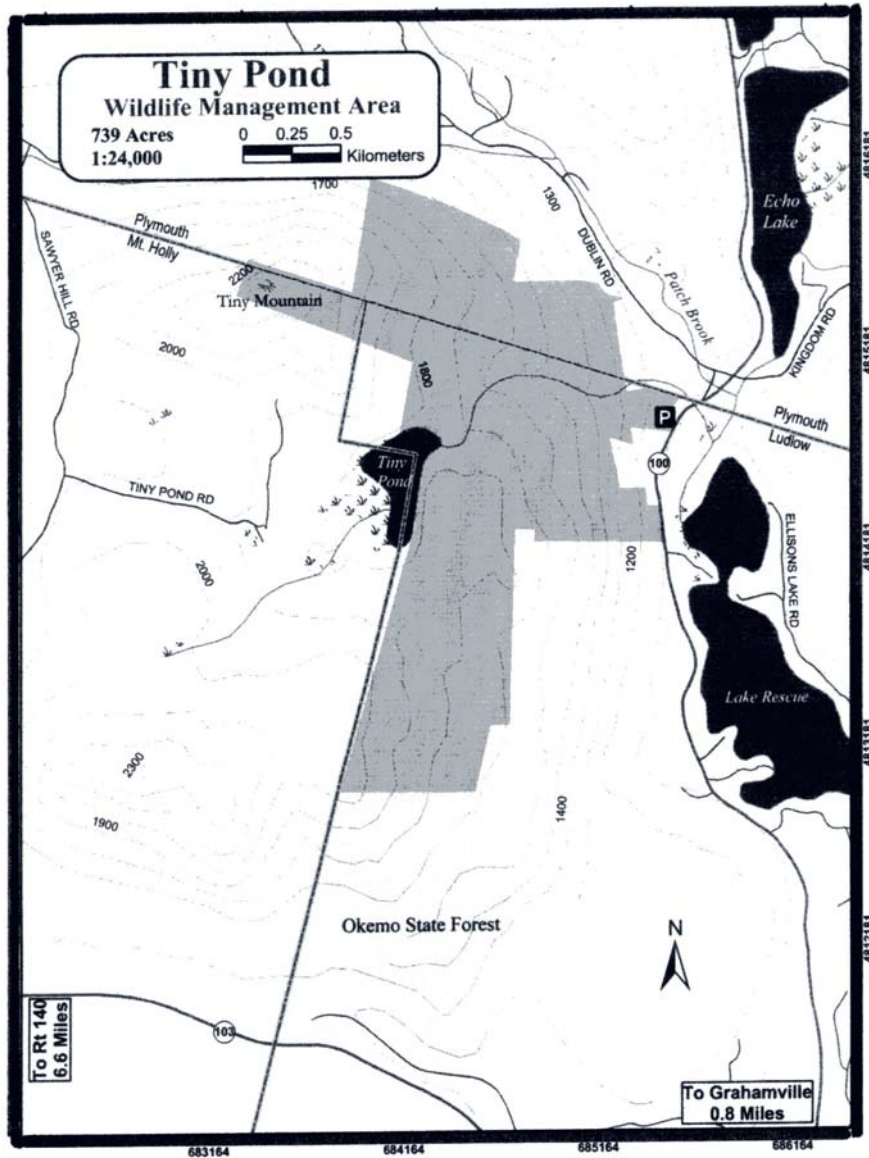
**MOUNT HOLLY PUBLIC and CONSERVED LANDS**

- |                                                                                                                    |                                                                                                                       |                                                                                                                                                      |
|--------------------------------------------------------------------------------------------------------------------|-----------------------------------------------------------------------------------------------------------------------|------------------------------------------------------------------------------------------------------------------------------------------------------|
|  Green Mountain National Forest |  Vermont Wildlife Management Areas |  Vermont Land Trust Conservation Easement                         |
|  Okemo State Forest             |  Bowen/Yale Forest                 |  Forest Legacy easement In process                                |
|                                                                                                                    |                                                                                                                       |  Agricultural and Managed Forest Land Value Program - Current Use |



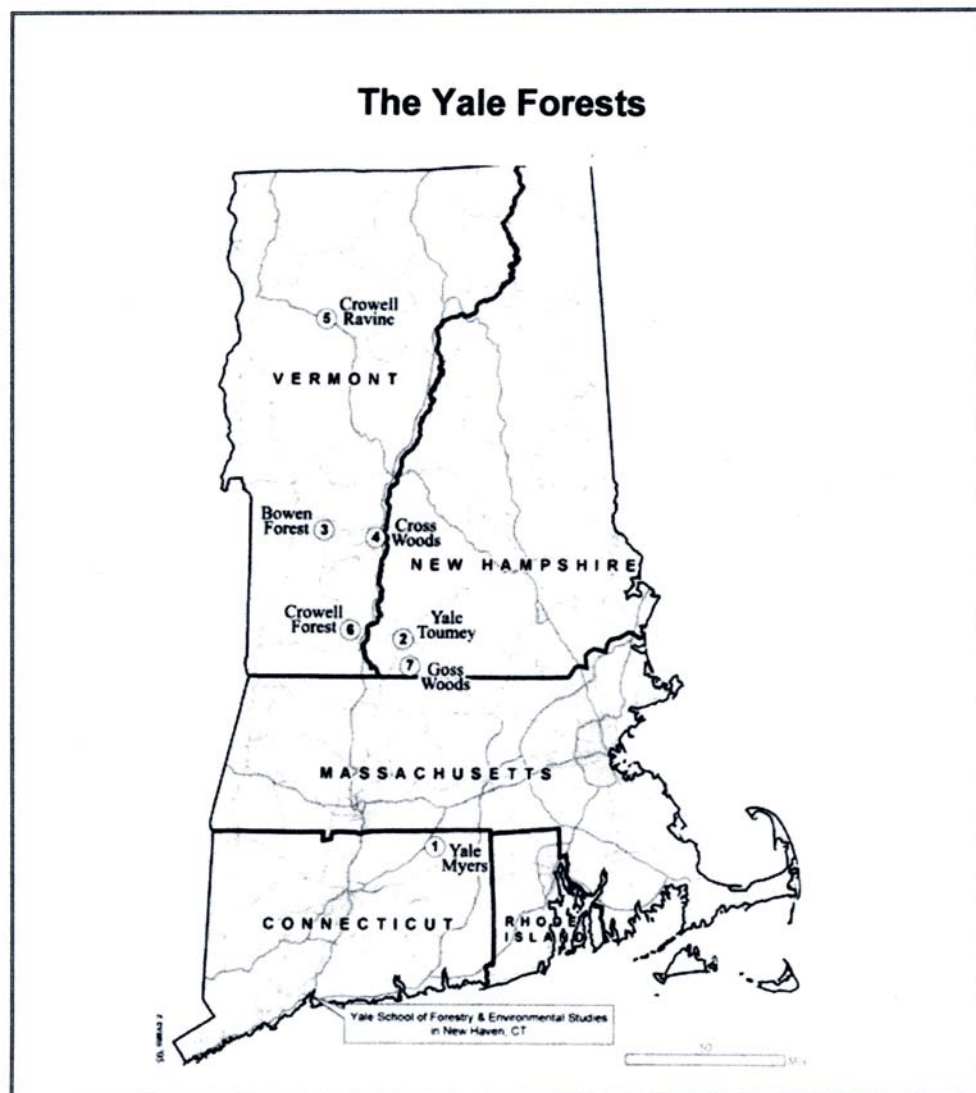


Map II a 9

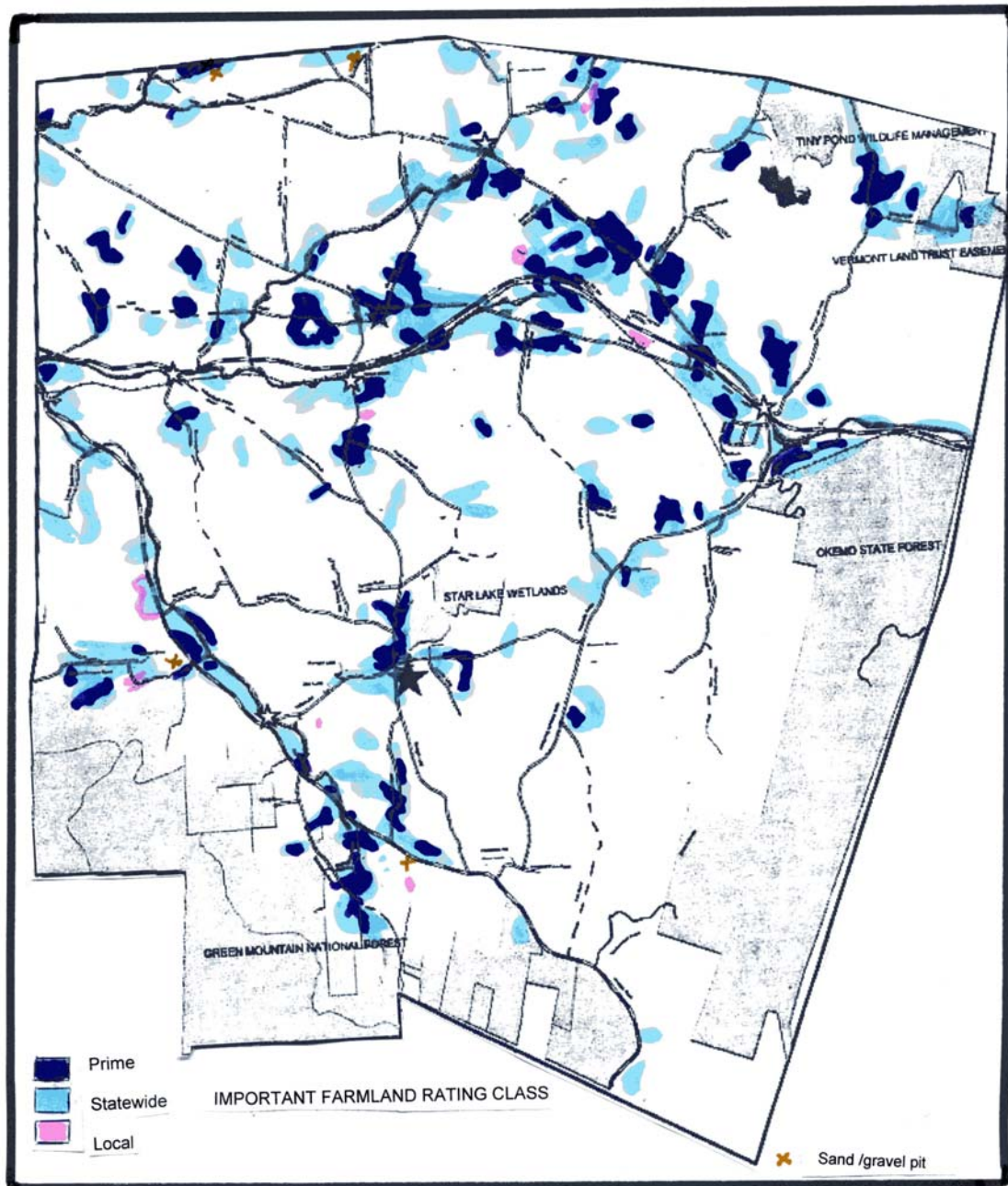


Map II a 10





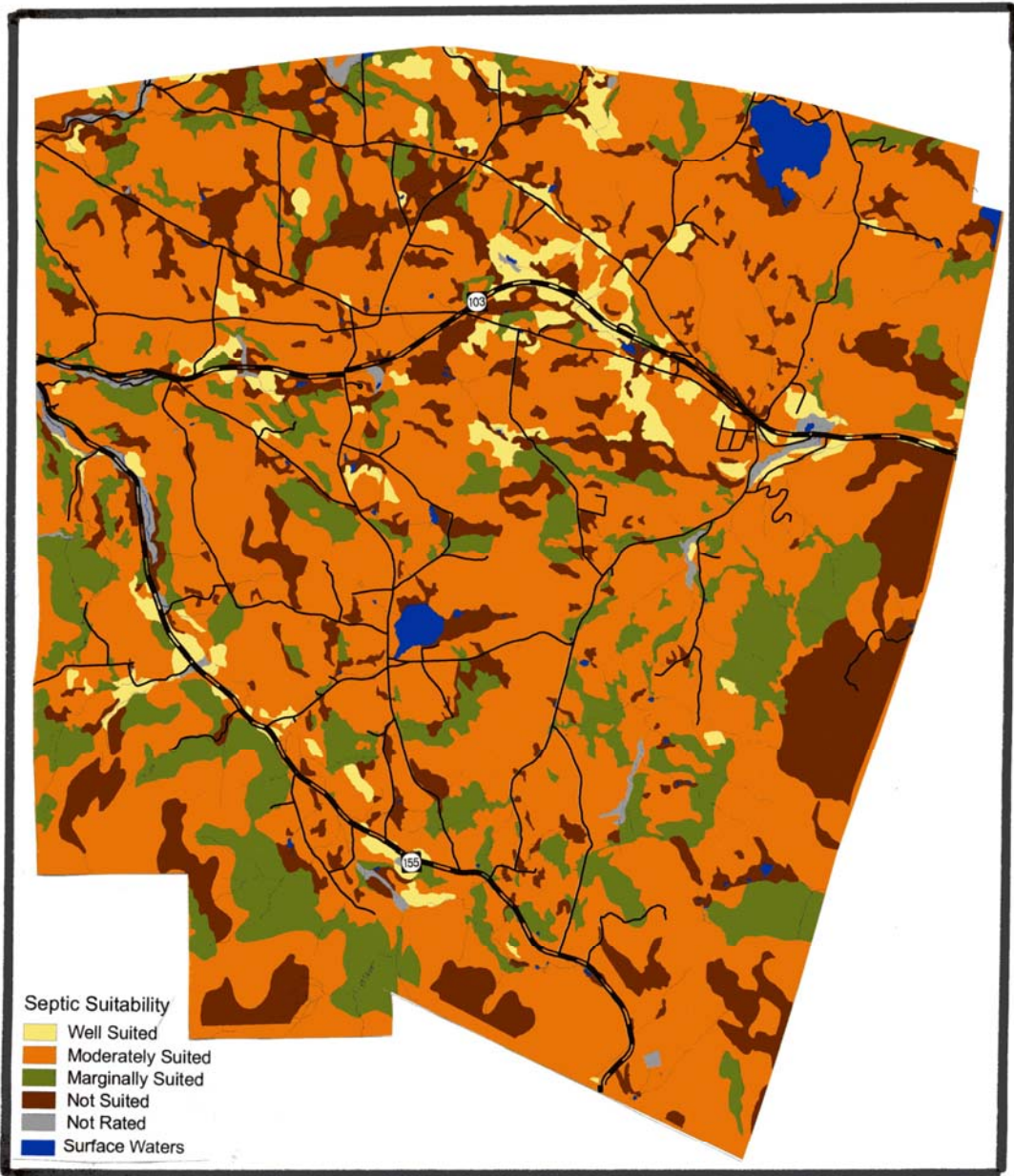
Map II a 11



Map II b 1

### PRIMARY AGRICULTURAL SOILS

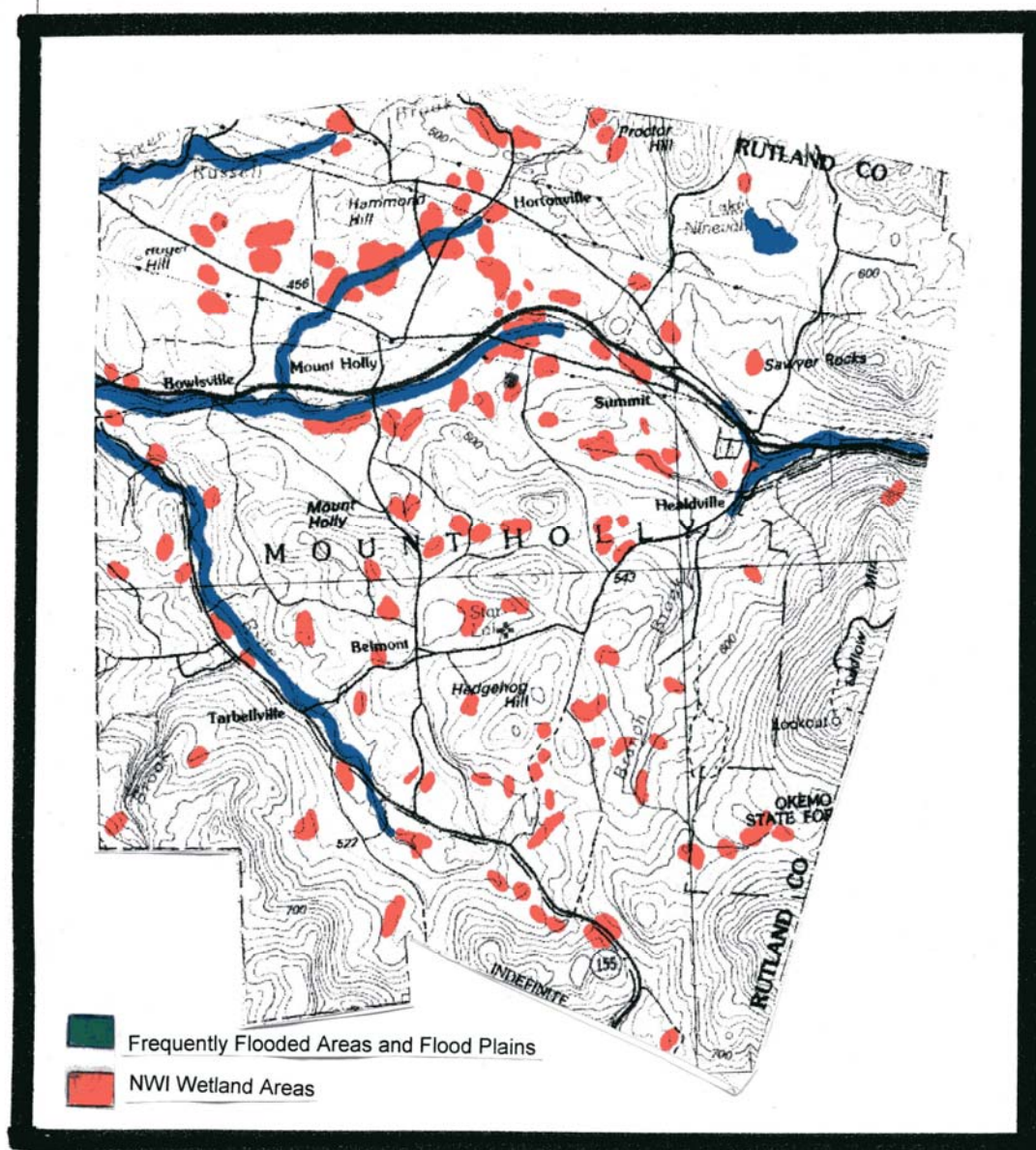




Map II b 2

## Septic Suitability 2003

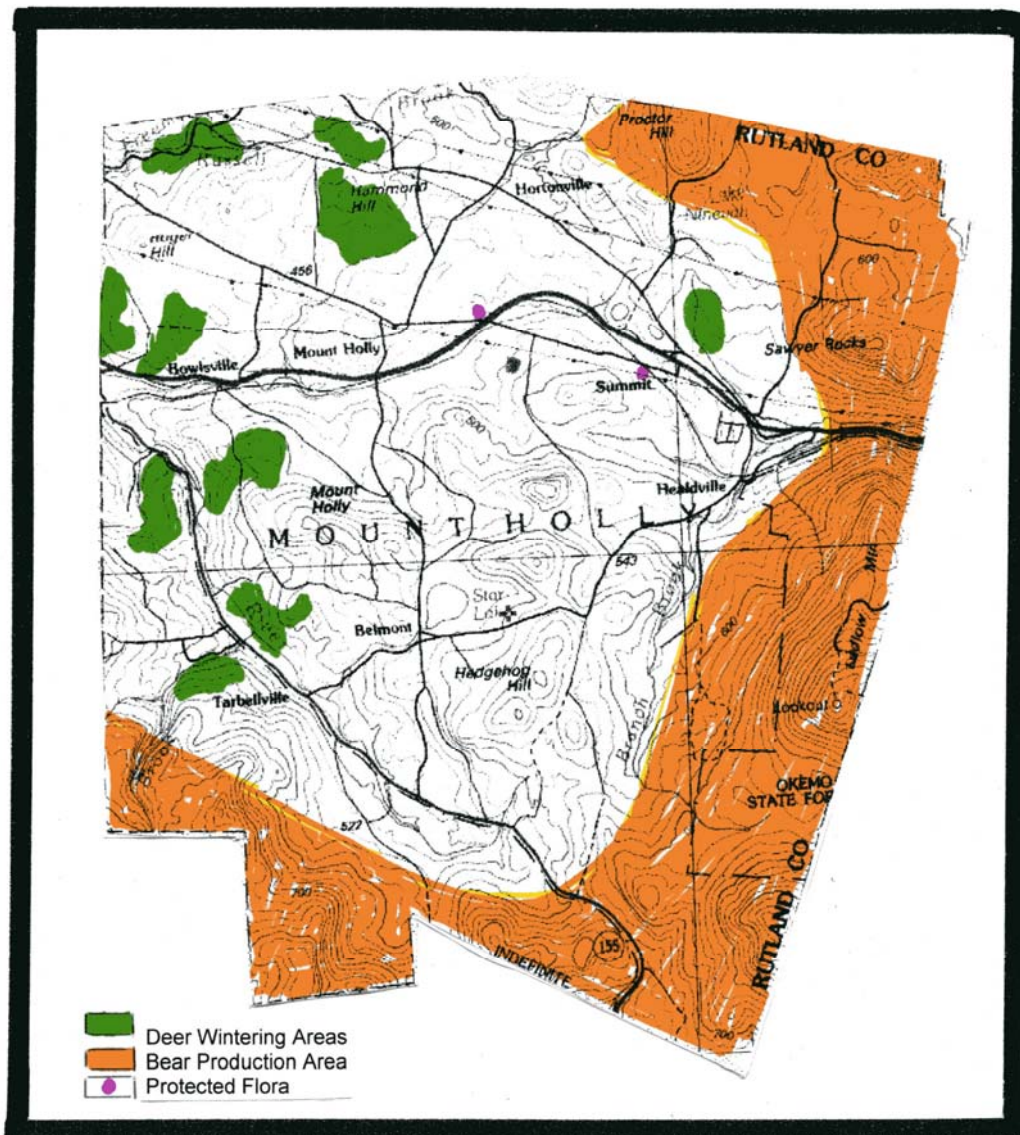
Soil Ratings for Residential On-Site Waste Disposal



Map II b 3

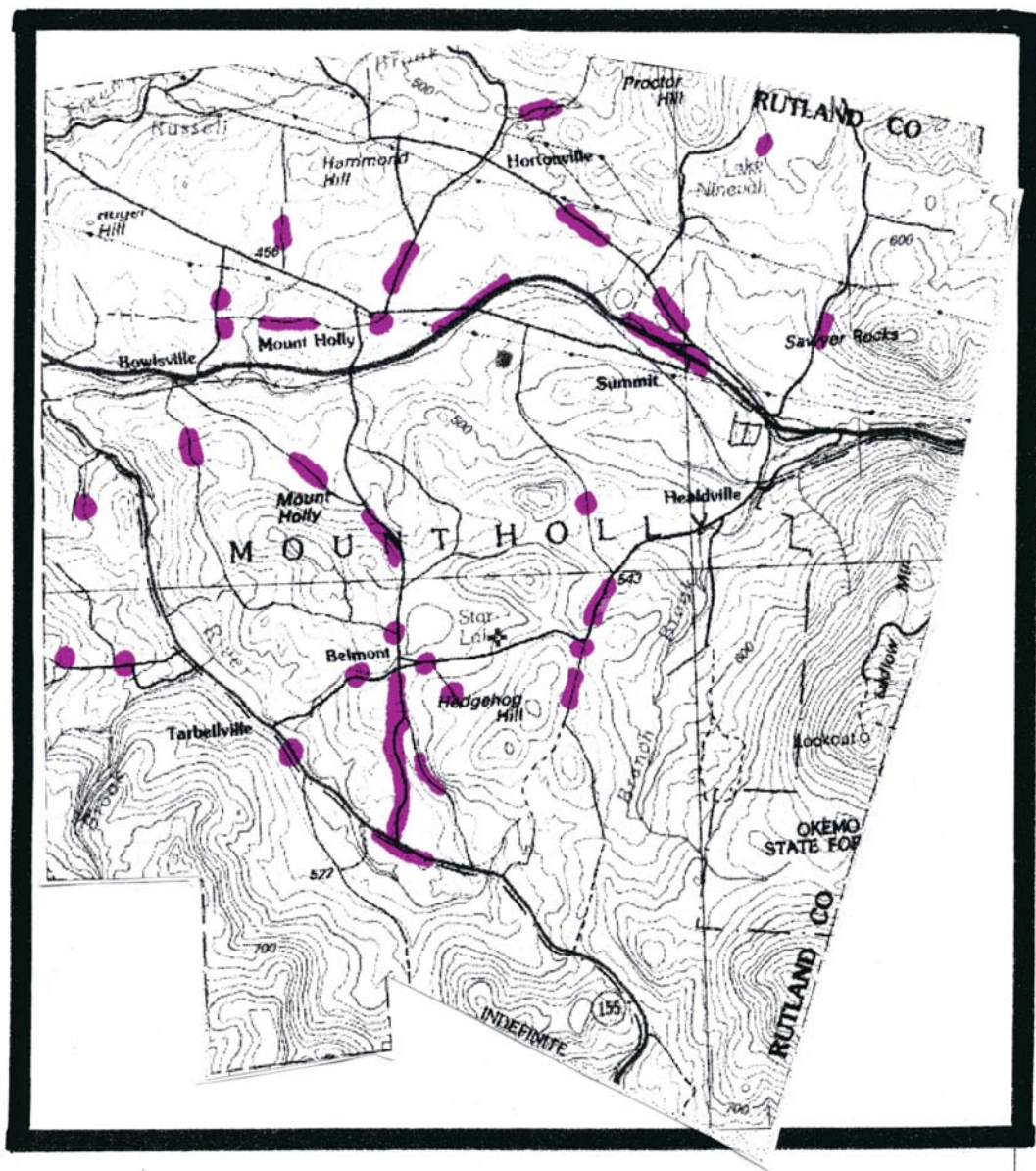
### FLOOD PLAINS and WETLANDS





Map II b 4

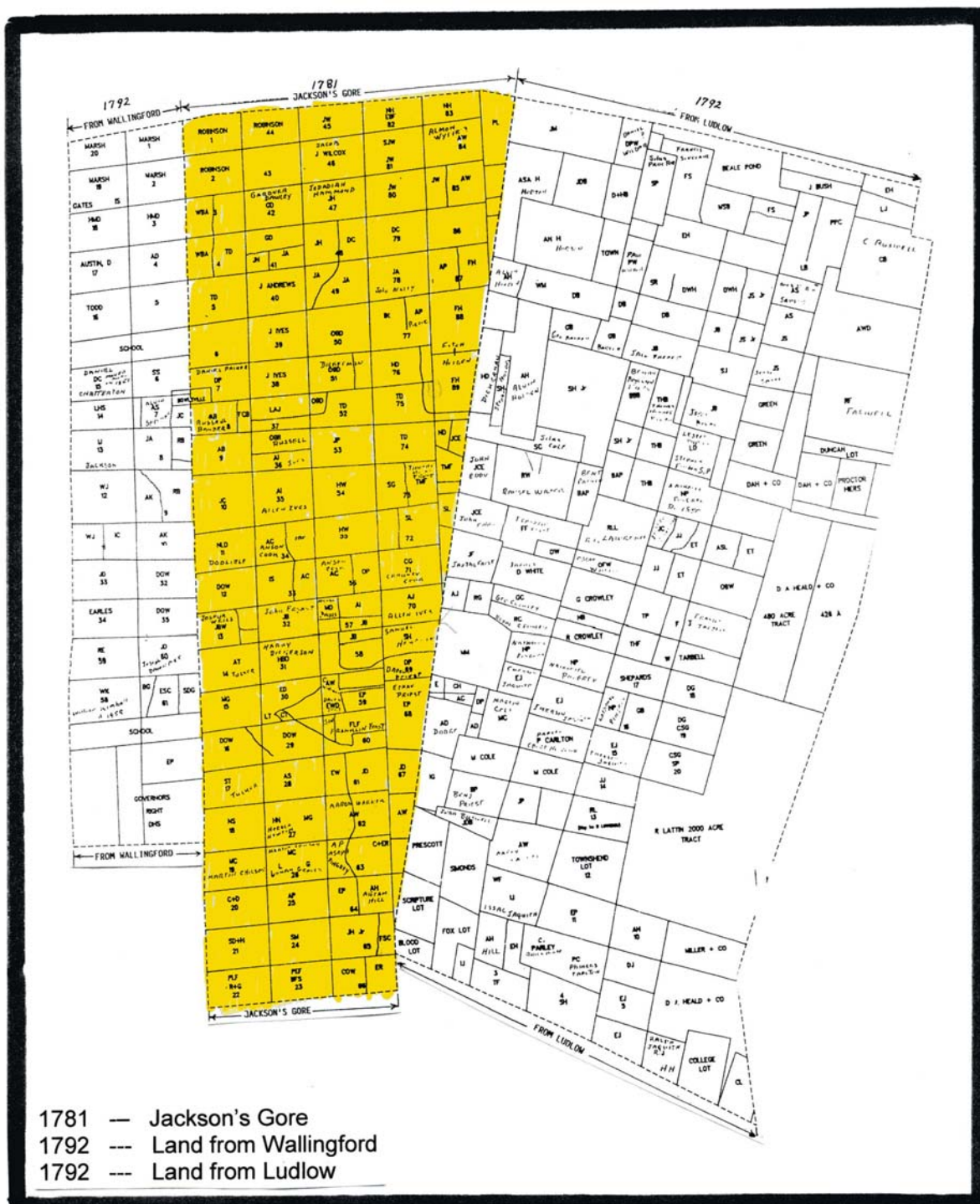
**DEER WINTERING, BEAR PRODUCTION, PROTECTED FLORA AREAS**



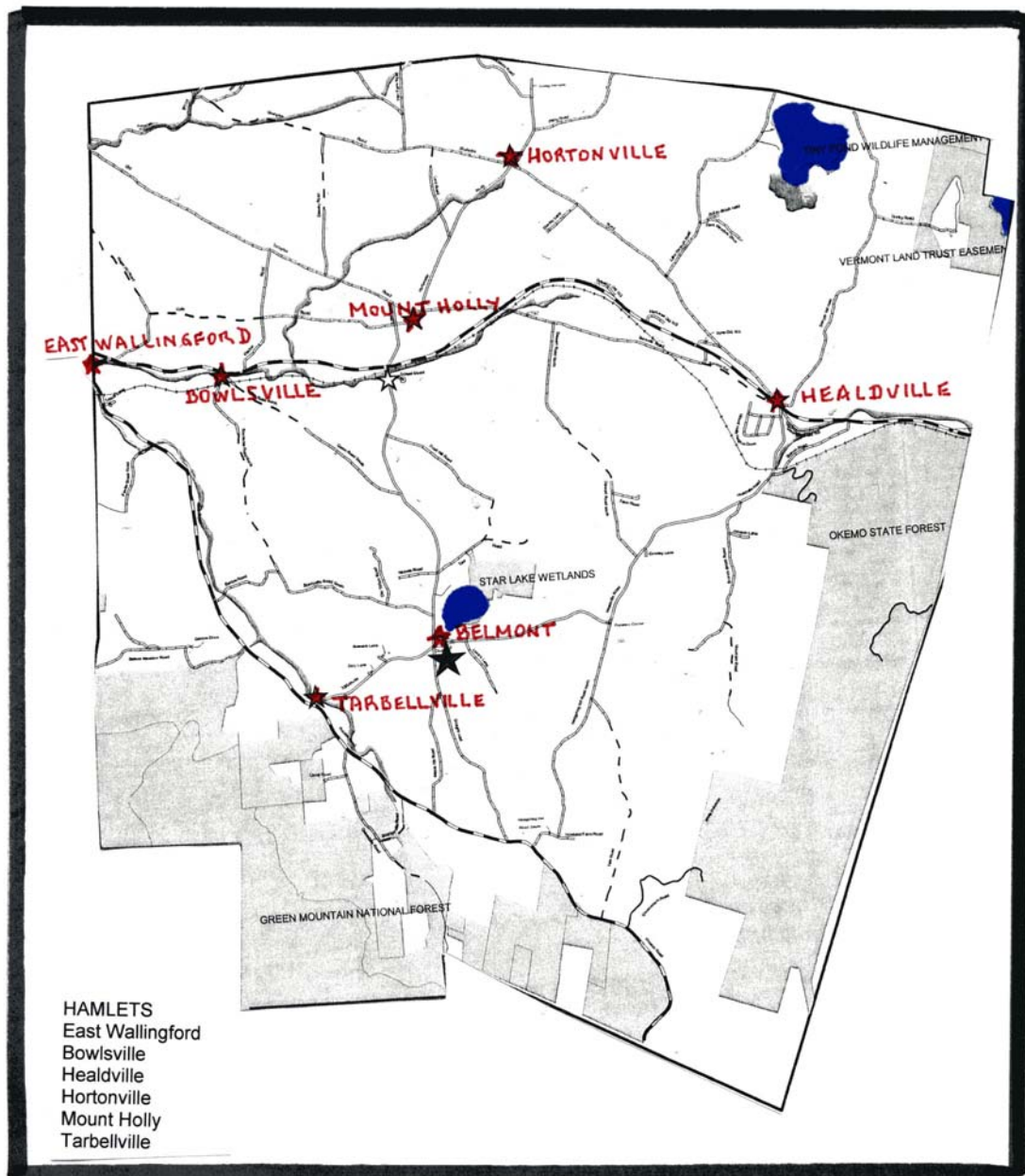
Map II b 5

**SCENIC ROADS and VISTAS**  
 Working Group of the Planning Commission, 2003



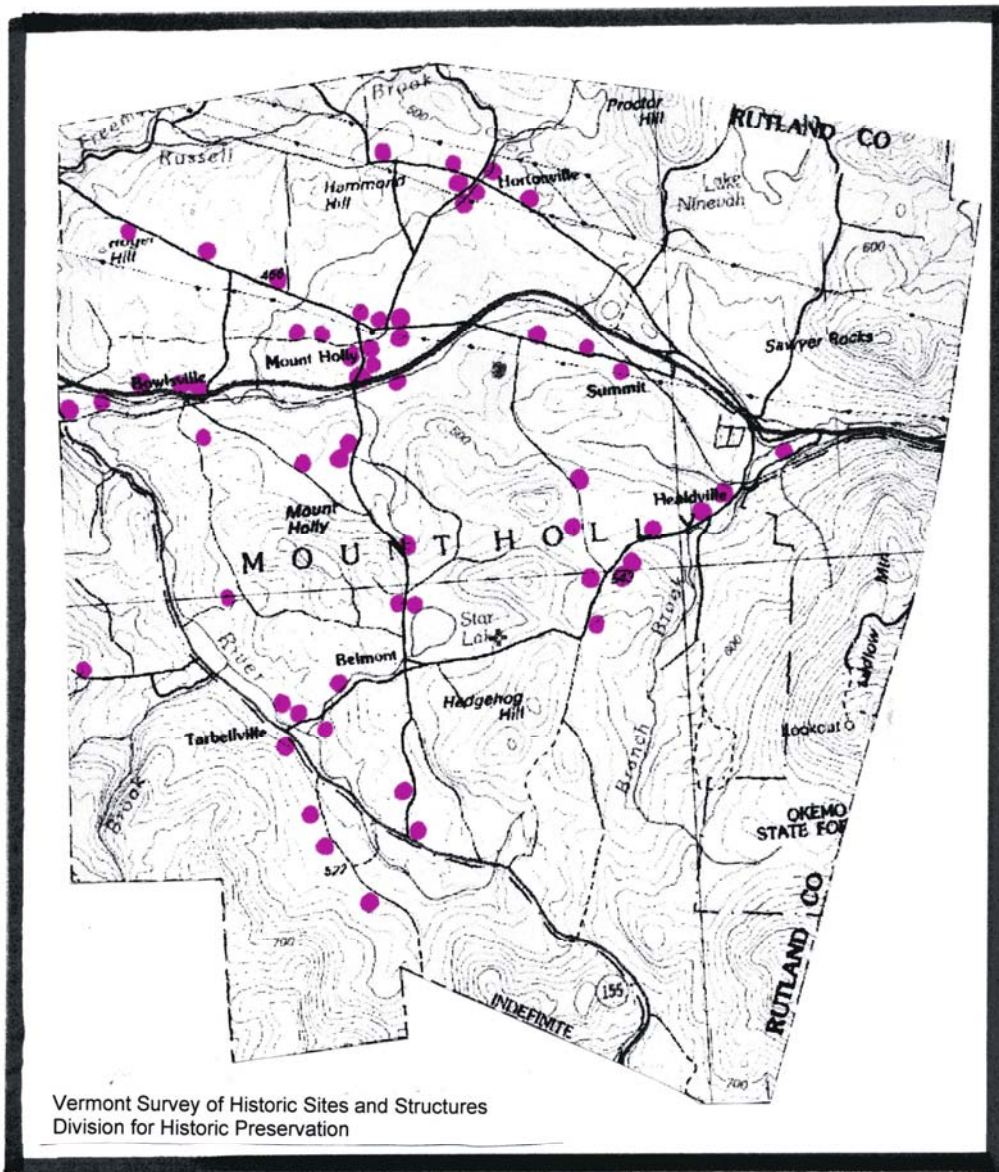






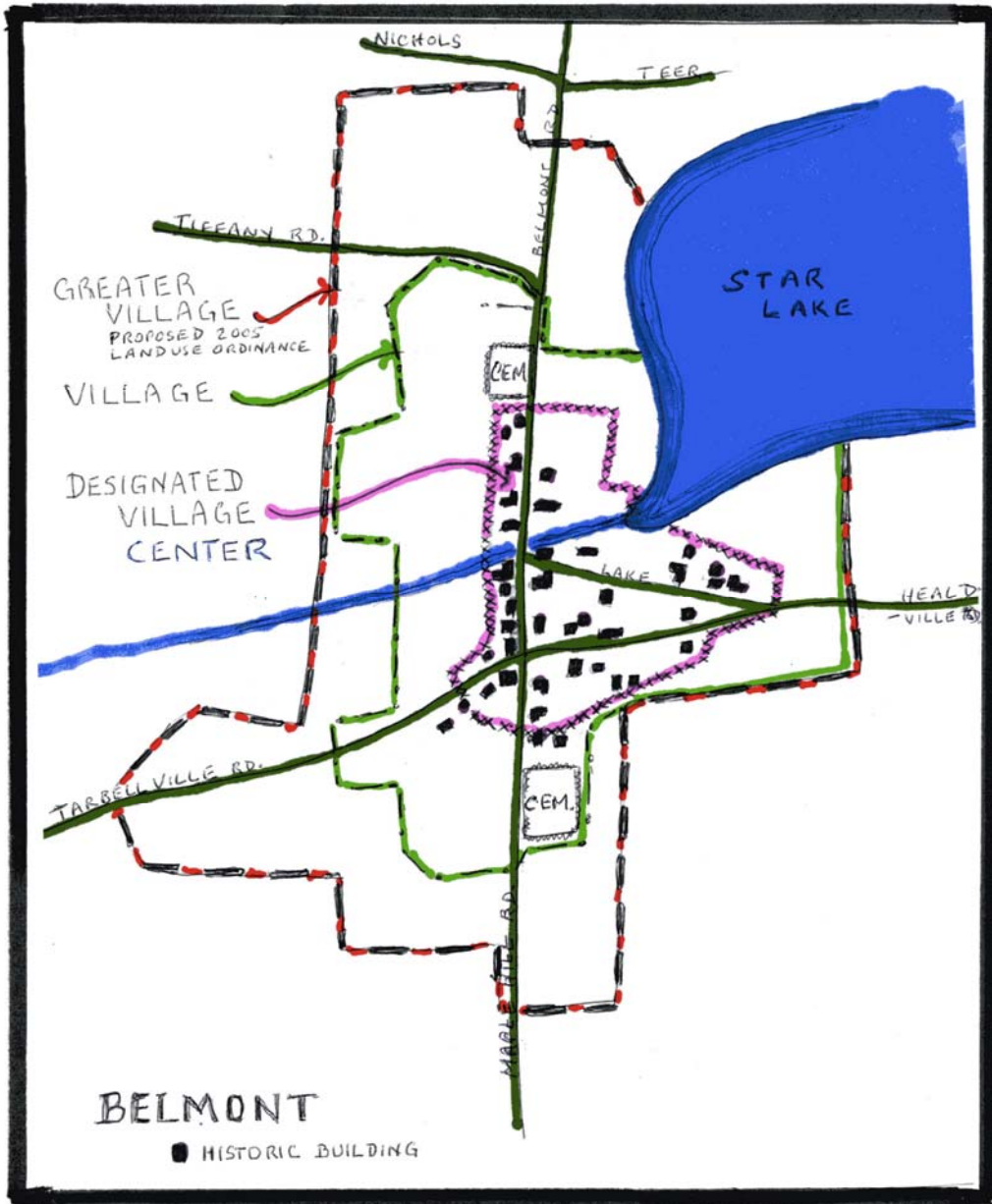
Map II c 2

# **VILLAGE of BELMONT and HAMLETS**



Map II c 3

## HISTORIC STRUCTURES

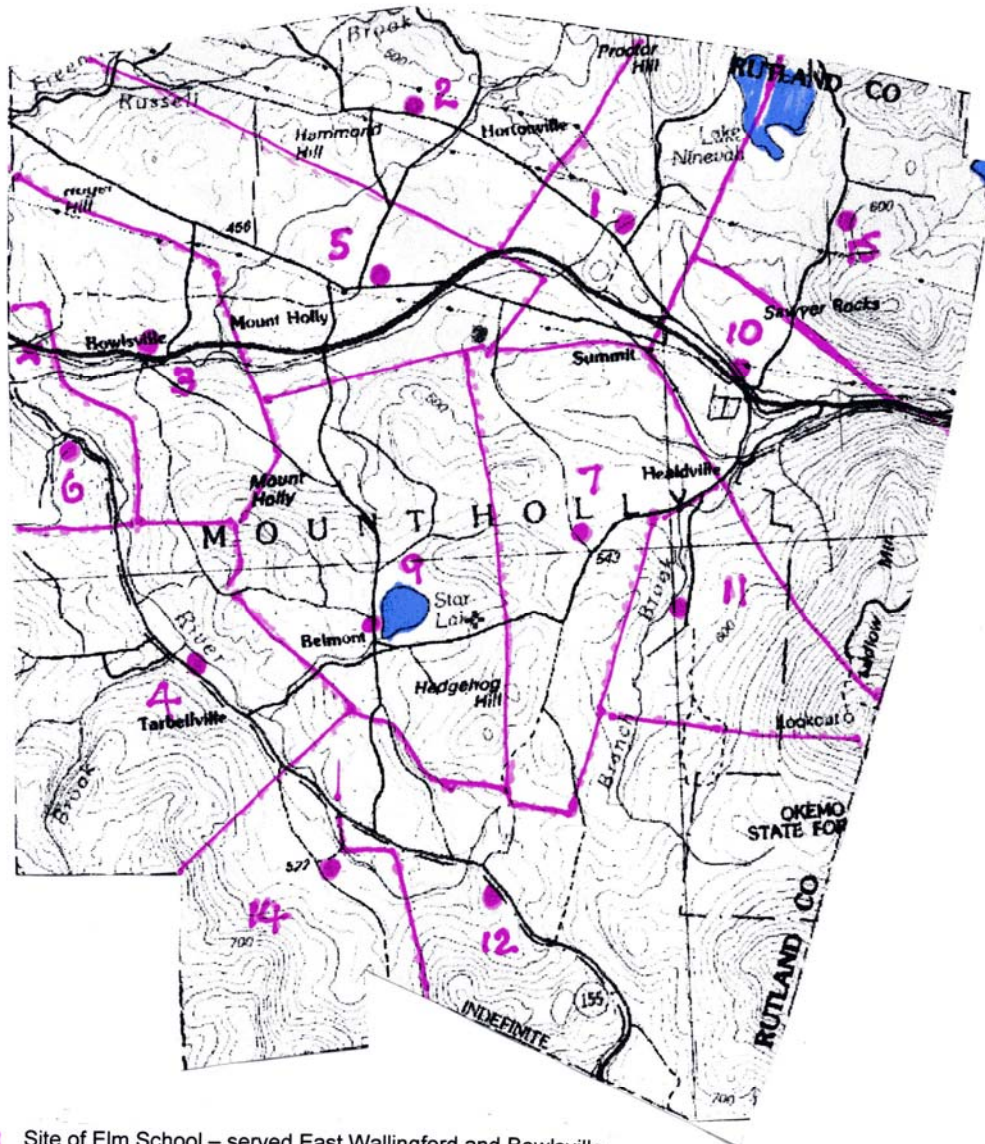


Map II c 4

**BELMONT VILLAGE  
HISTORIC BUILDINGS IN DESIGNATED VILLAGE CENTER**

Vermont Survey of Historic Sites and Structures  
Division for Historic Preservation – State Register of Historic Places





✕ Site of Elm School – served East Wallingford and Bowlsville

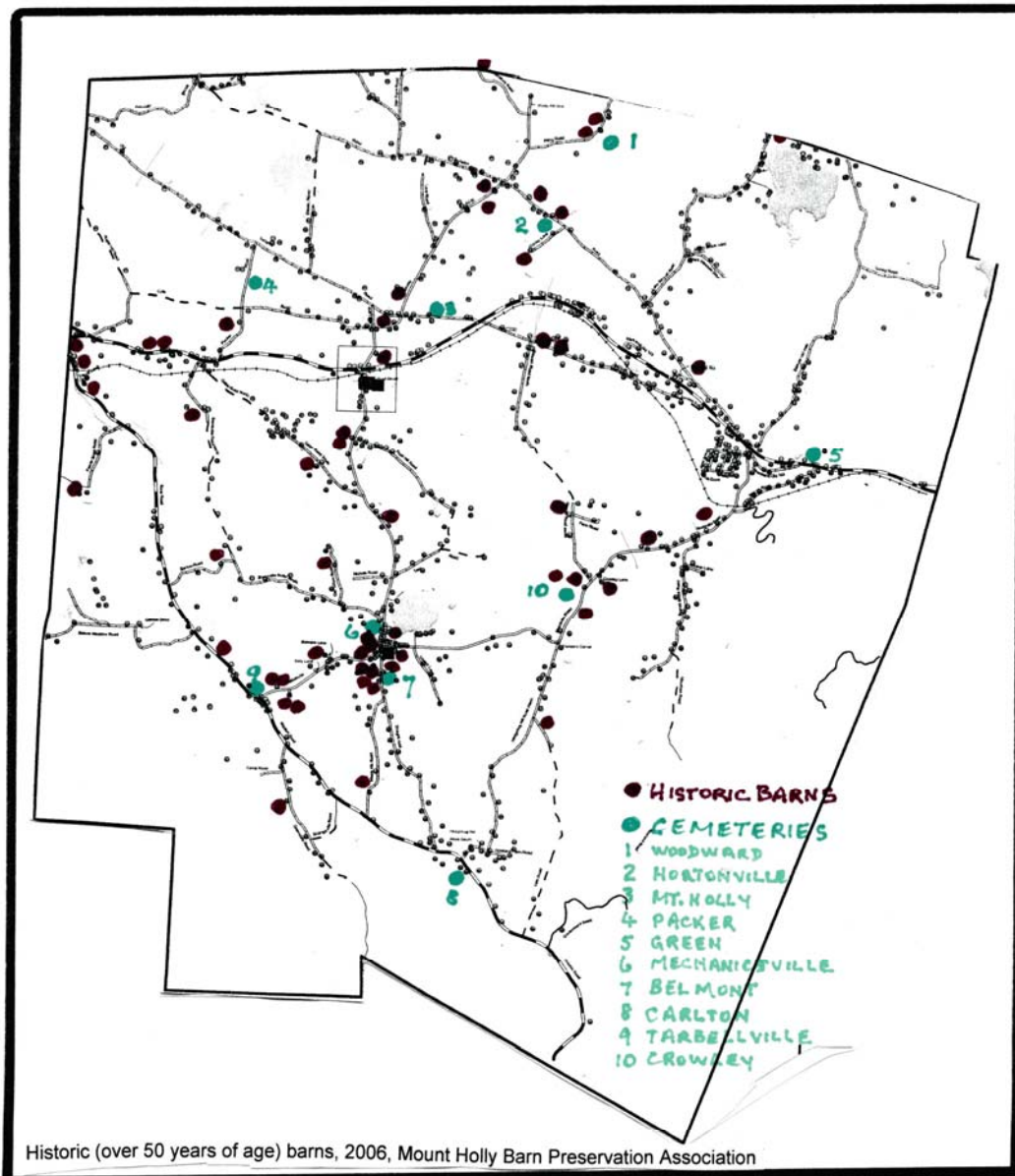
Map II c 5

## HISTORIC SCHOOL DISTRICTS and SCHOOL SITES

From Carroll Tarbell "History of Mount Holly, Vermont"

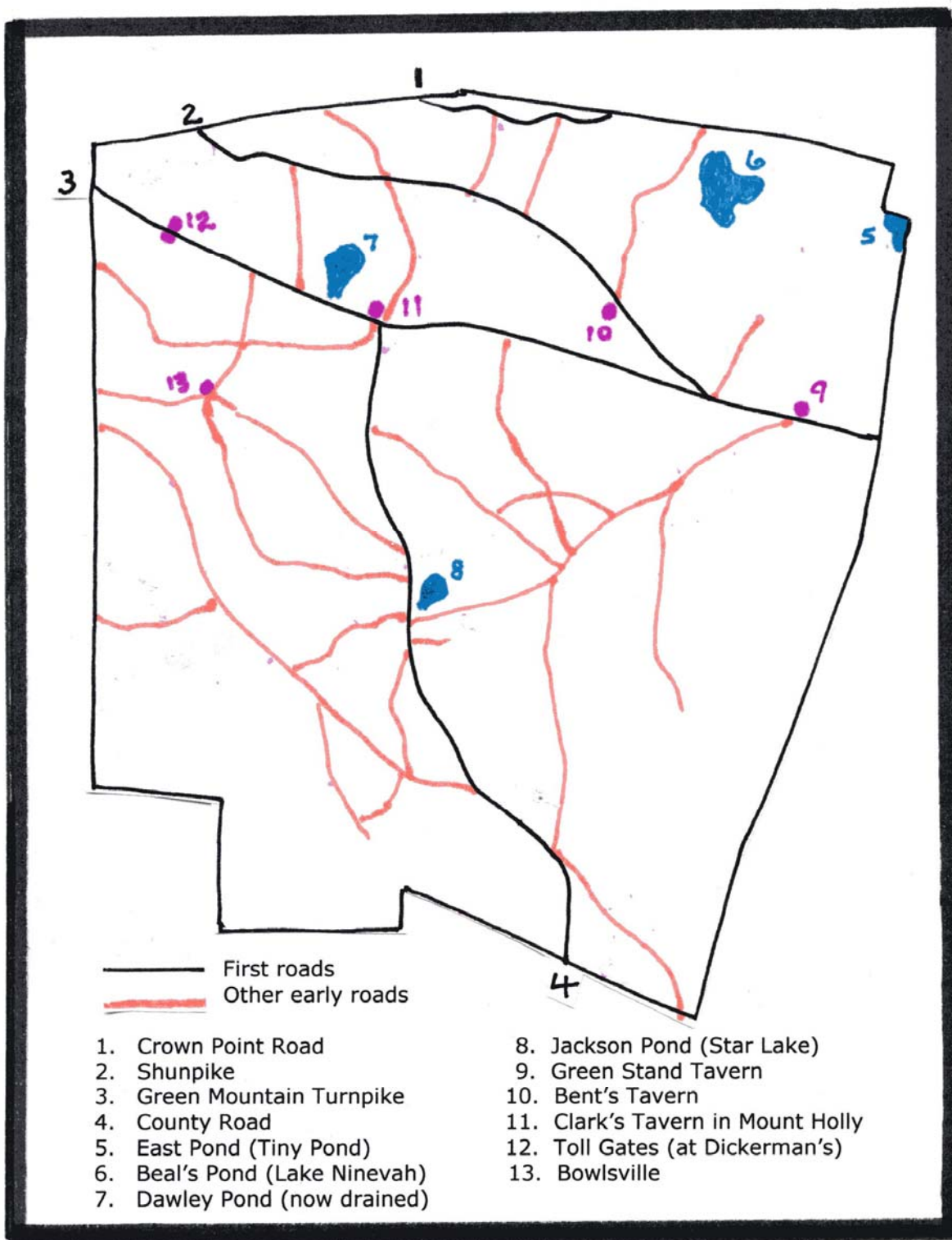
### School buildings today:

- |                                   |                                    |
|-----------------------------------|------------------------------------|
| 1. Moved, incorporated into house | 7. Burned                          |
| 2. Incorporated into house        | 8. —                               |
| 3. Taken down, poor condition     | 9. Taken down                      |
| 4. Burned                         | 10. Standing                       |
| 5. Incorporated into house        | 11. Incorporated into house        |
| 6. Washed away in flood           | 12. Incorporated into house        |
|                                   | 14. Moved, incorporated into house |



Map II c 6

# HISTORIC BARNs and CEMETERIES

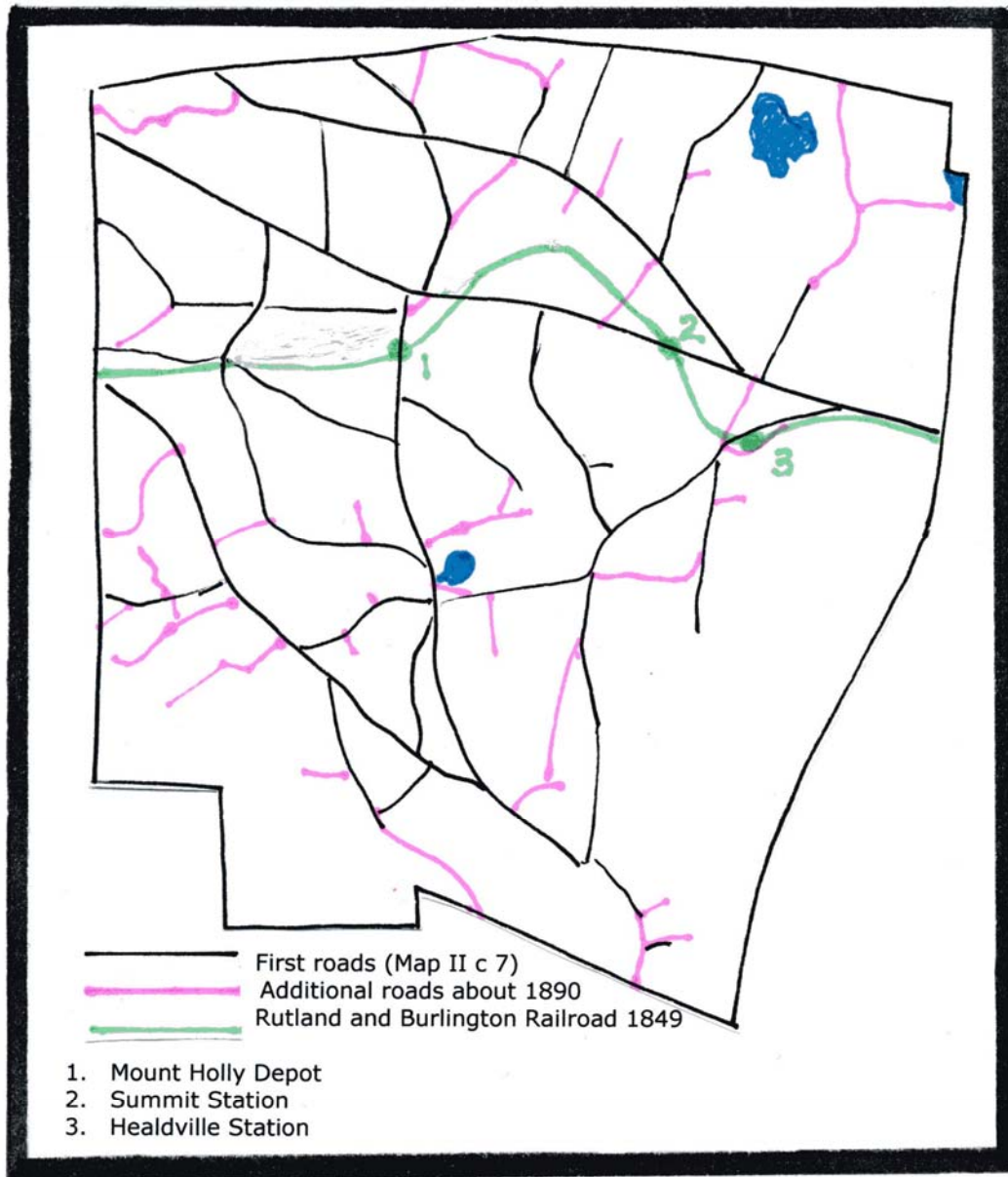


Map II c 7

### FIRST ROADS

*Shows importance of road junction on Turnpike in growth of the Hamlet of Mount Holly*



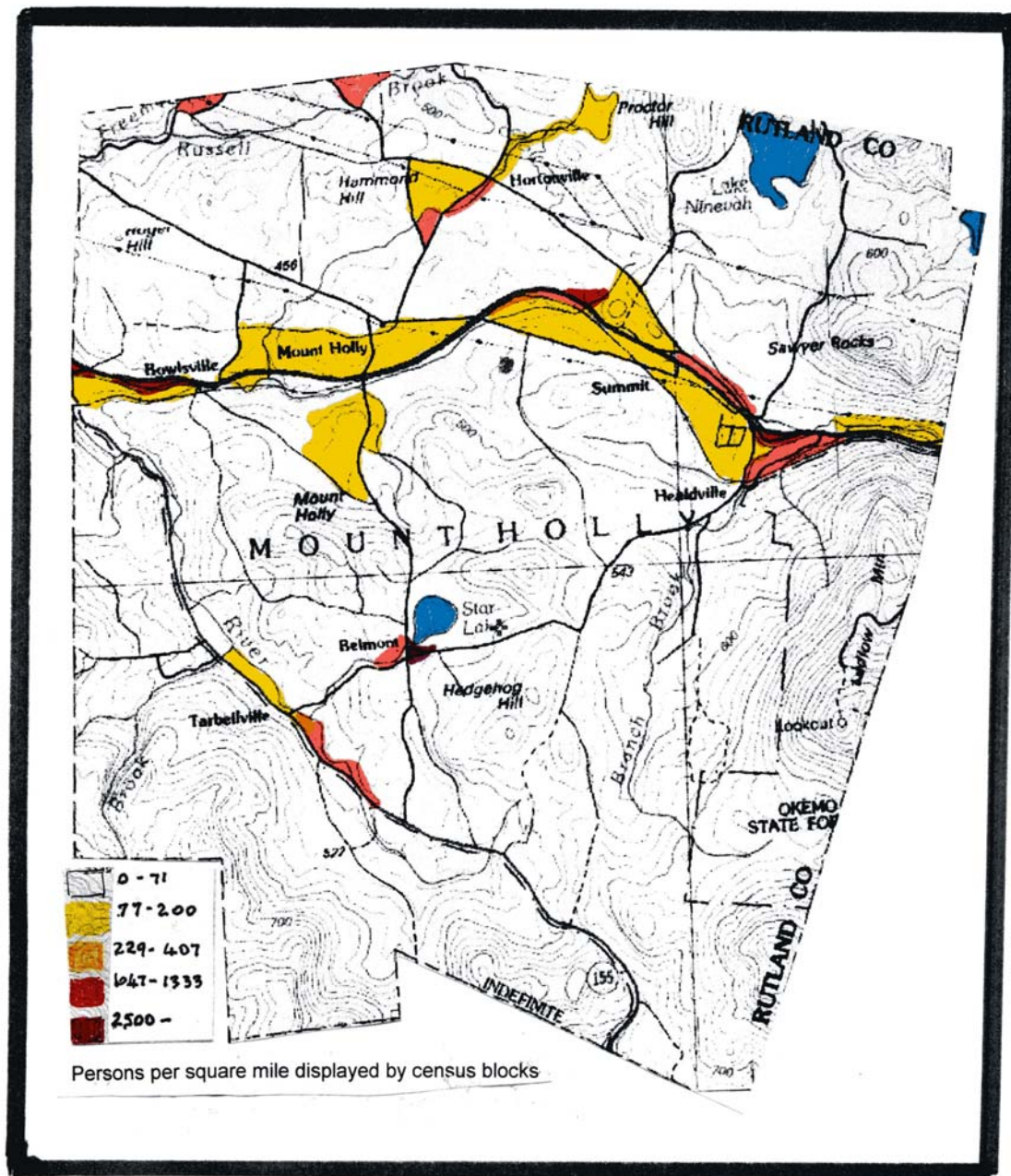


Map II c 8

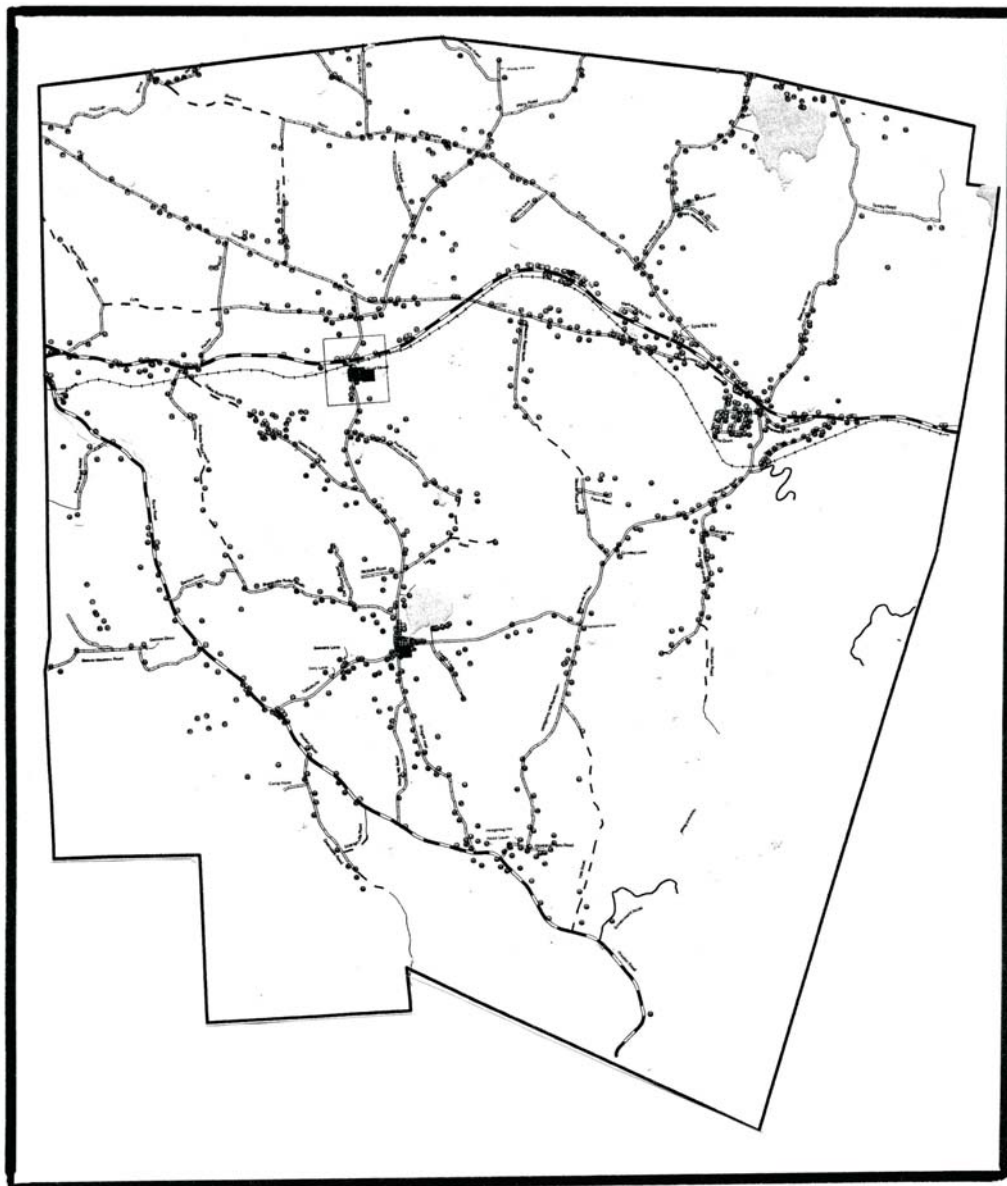
### RAILROAD AND ROADS about 1890

*The Rutland and Burlington Railroad was originally built through Mount Holly to Bellows Falls. The Mount Holly section was completed in 1849 and is currently operated by Green Mountain Railway. Except for occasional excursion trains, passenger service was ended by the Rutland Railroad in the early 1950s.*

*Vermont Route 103 grew along the side of the Railroad and on the old Turnpike. It was a gravel road in 1925, being paved in 1930. Between 1954 and 1966, Route 103 was relocated and rebuilt in sections. Vermont Route 155 was brought into the state system in 1959 and a short section north of Tarbellville Road was rebuilt ten years later. Sections of Vermont Route 140 were paved as local roadway between 1948 and 1953, and were brought into the state system in 1967*

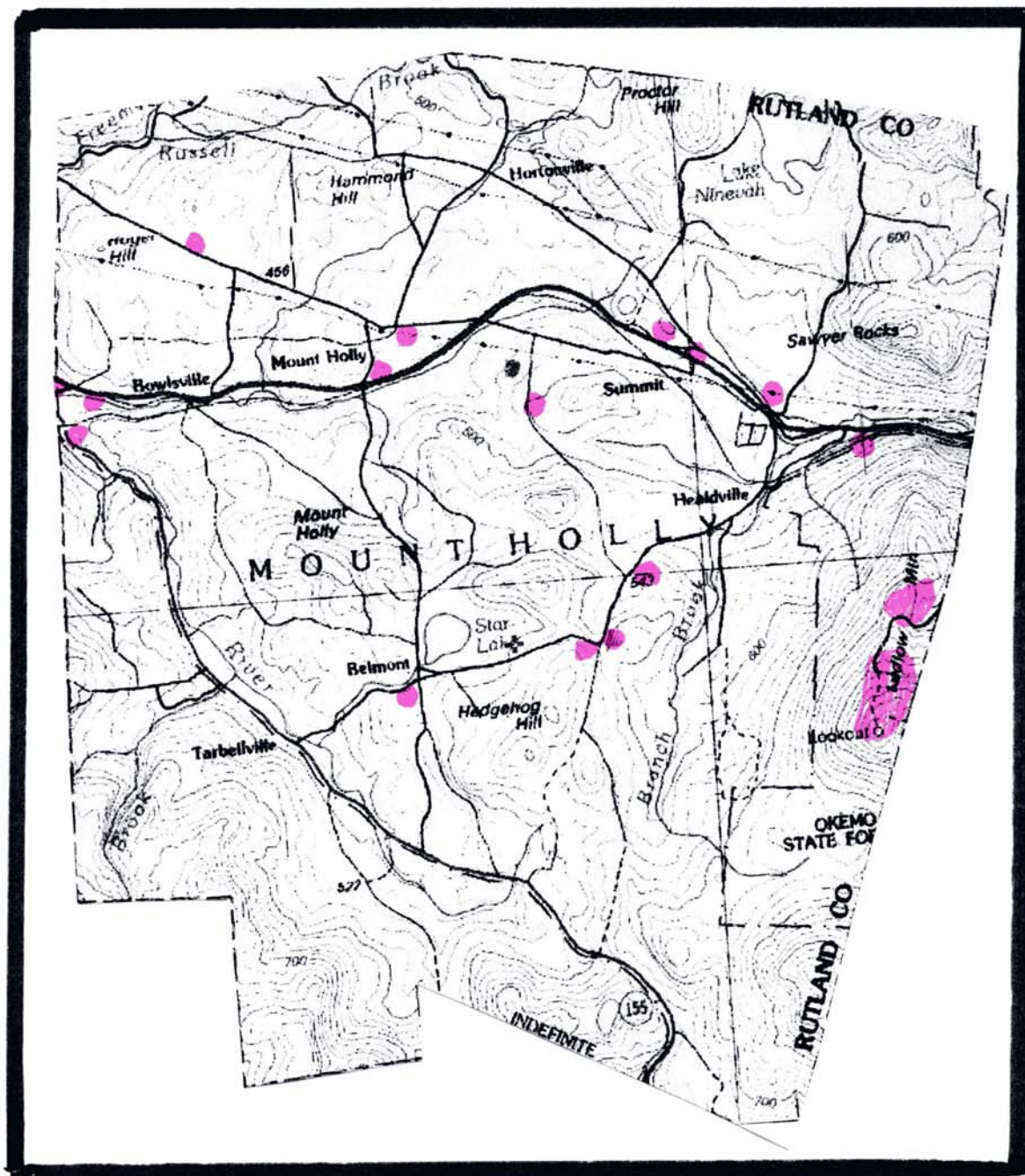


Town population density = 25 persons per square mile (2000 Census)



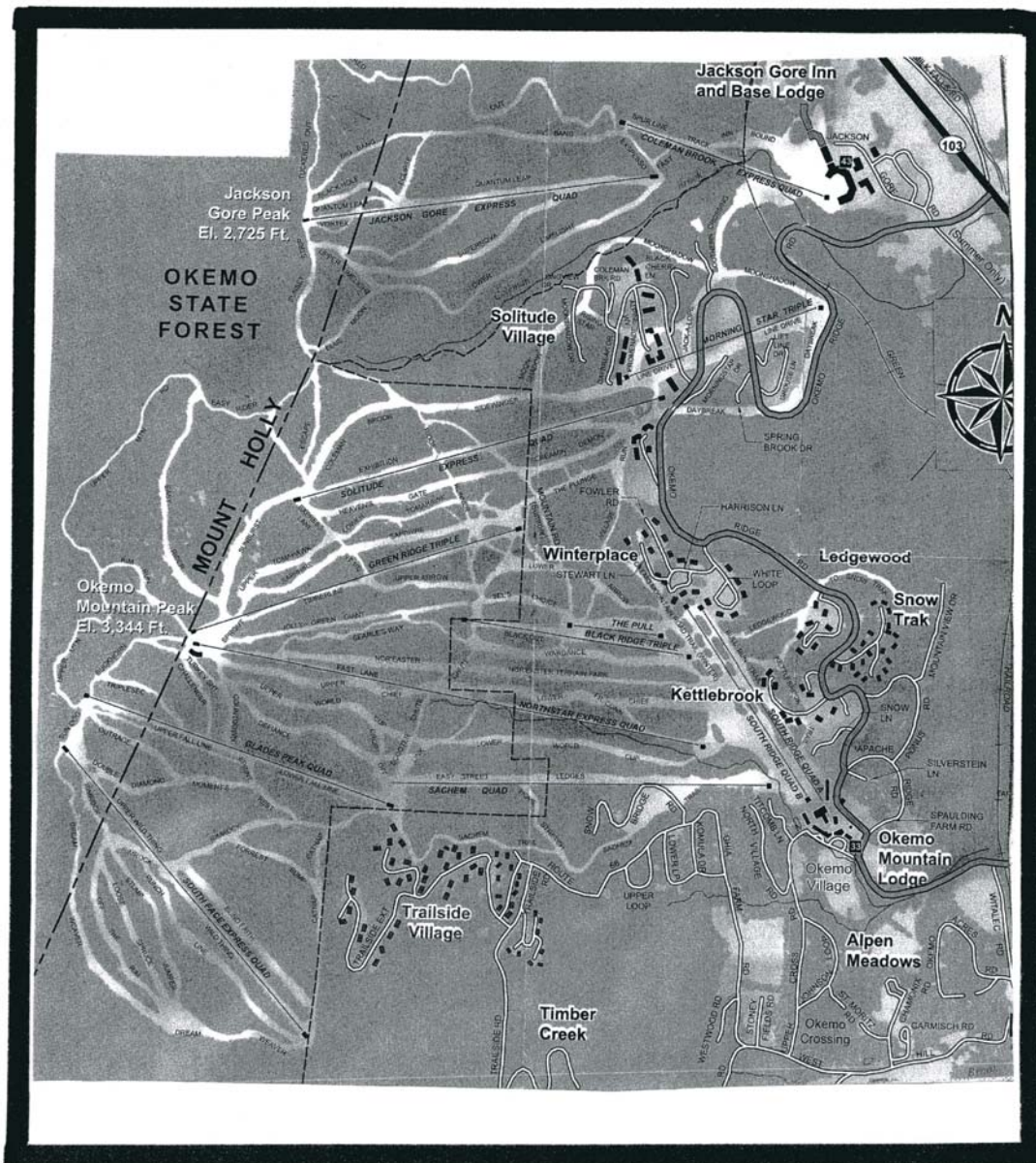
Map IV 1      **ROADS, RAILROAD, and RESIDENCES in MOUNT HOLLY**





Map V 1

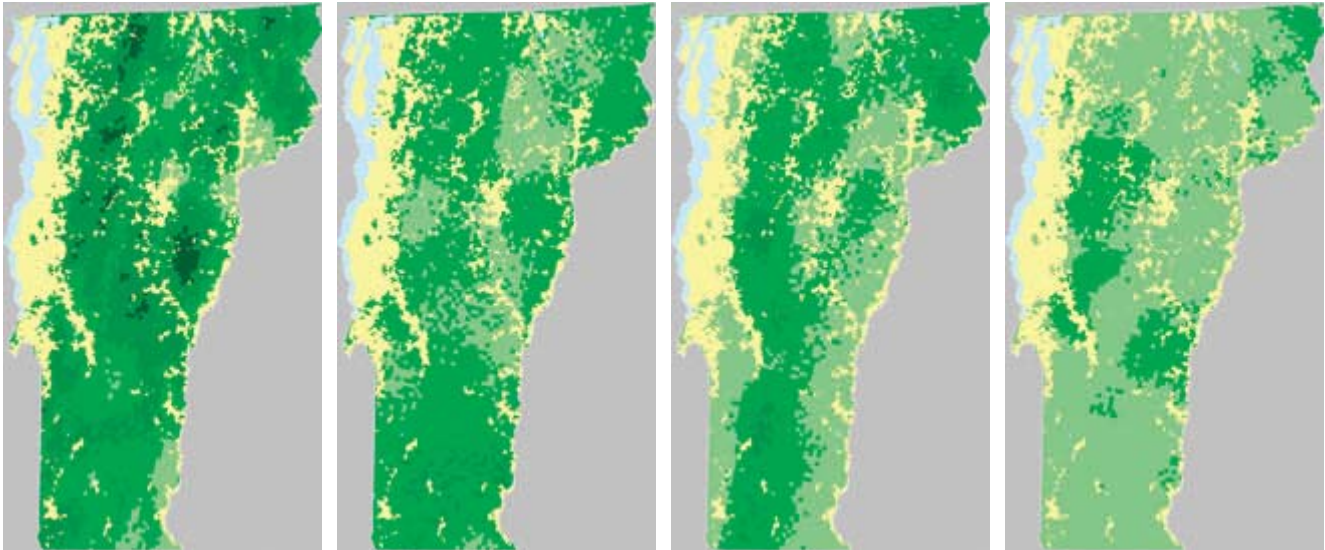
COMMERCIAL and INDUSTRIAL SITES (2000)



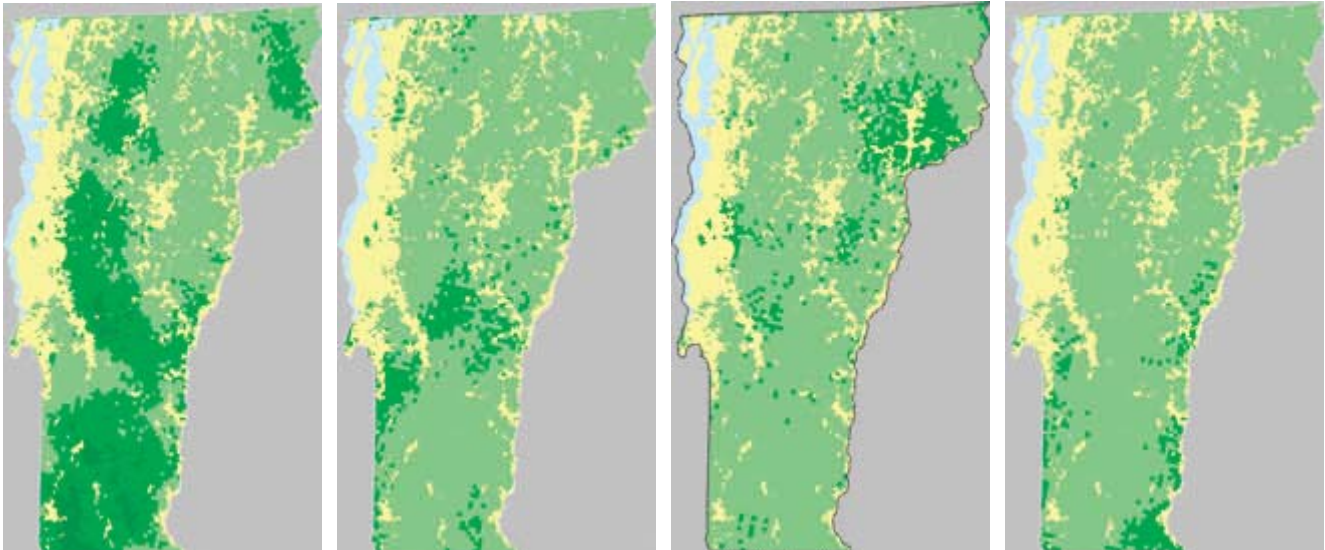
**OKEMO MOUNTAIN RESORT – SKI TRAILS in MOUNT HOLLY**

Map V 2

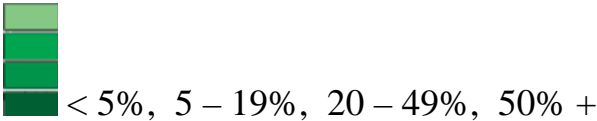




Sugar Maple                      Red Maple                      Yellow Birch                      Paper Birch



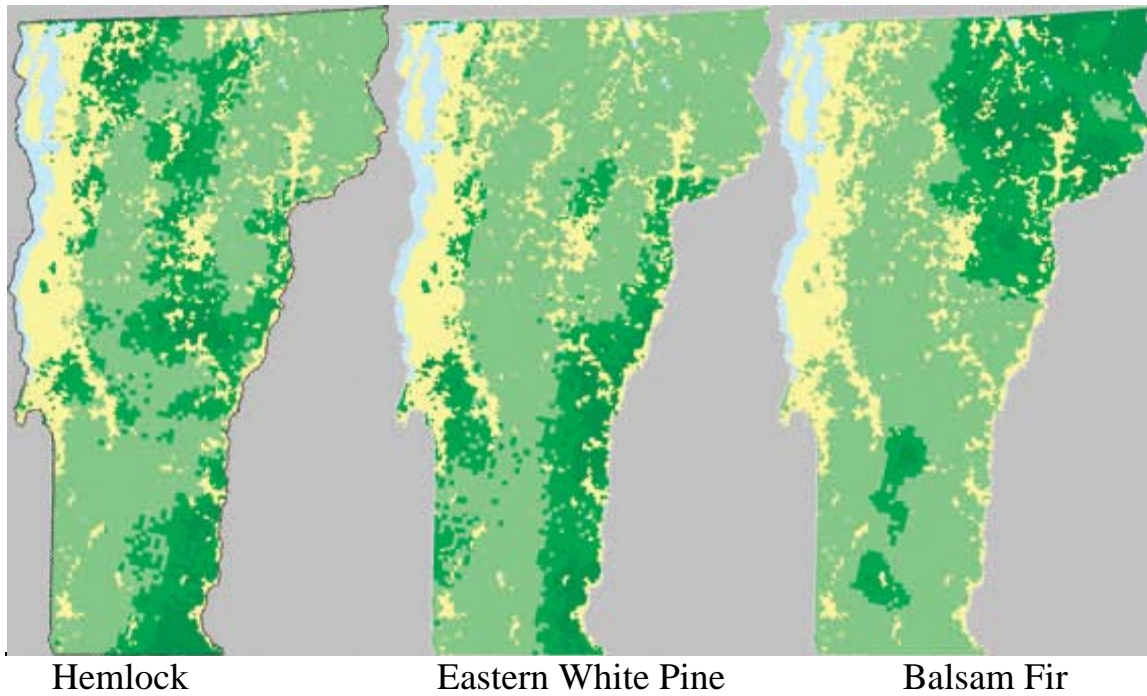
Beech                      Ash                      Aspen                      Northern Red Oak



SPECIES DISTRIBUTIO OF SELECTED HARDWOOD SPECIES

USDA Forests of the Green Mountain State

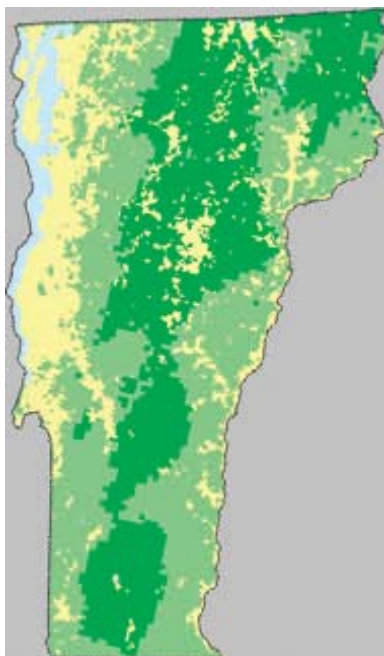




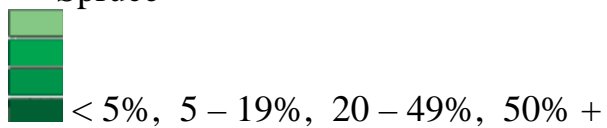
Hemlock

Eastern White Pine

Balsam Fir

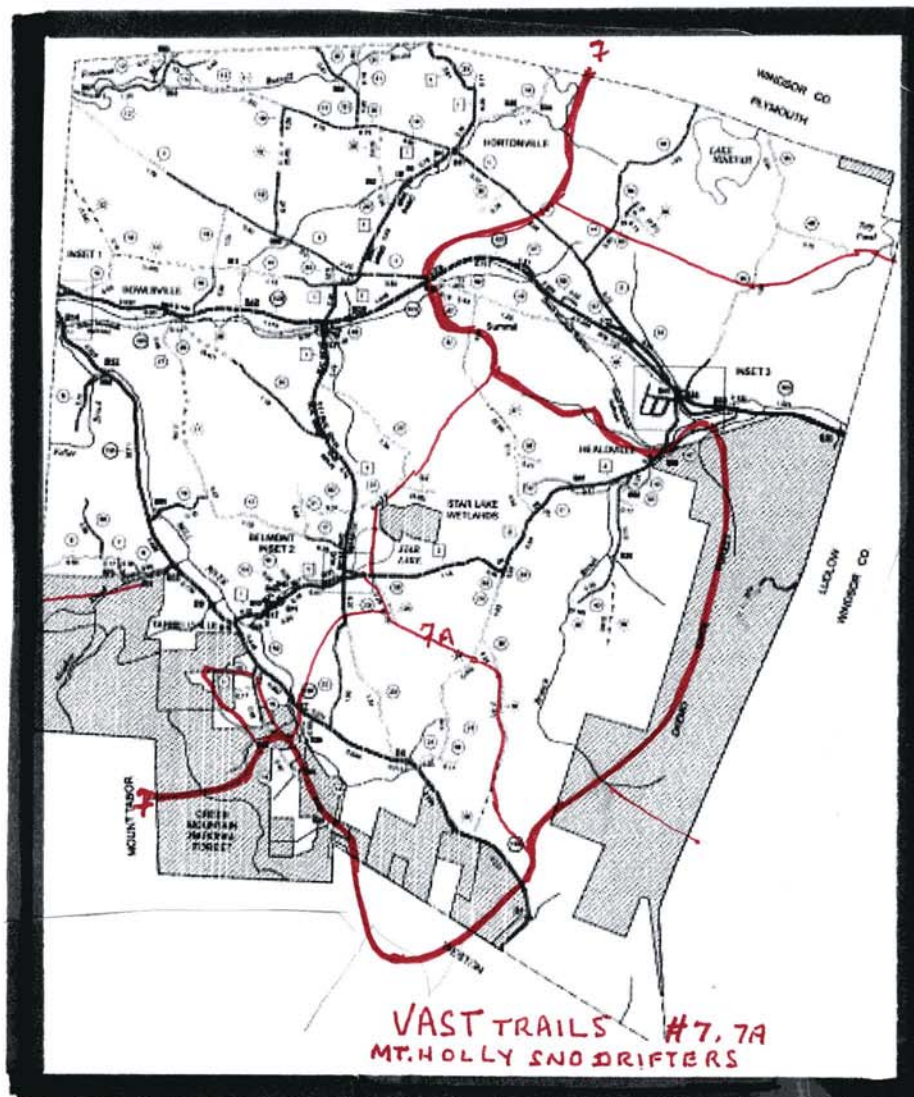


Spruce



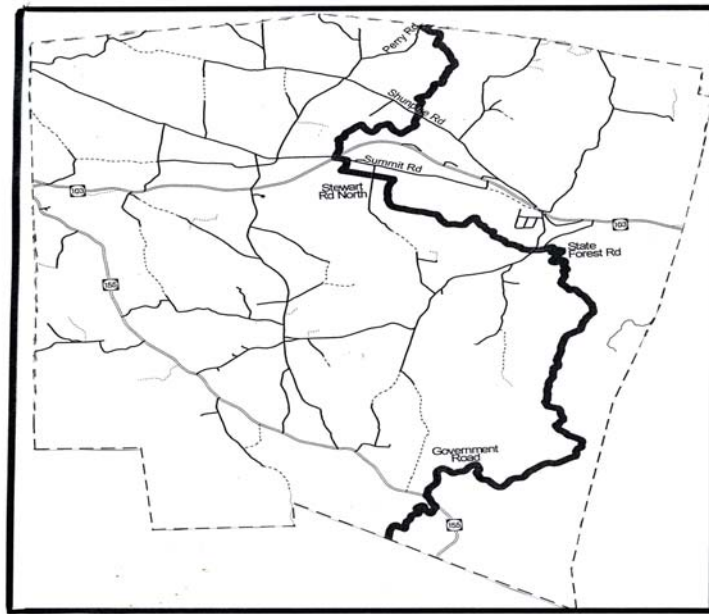
## Species Distribution of Selected Softwood Species

**USDA**  
**Forests of the Green Mountain State**



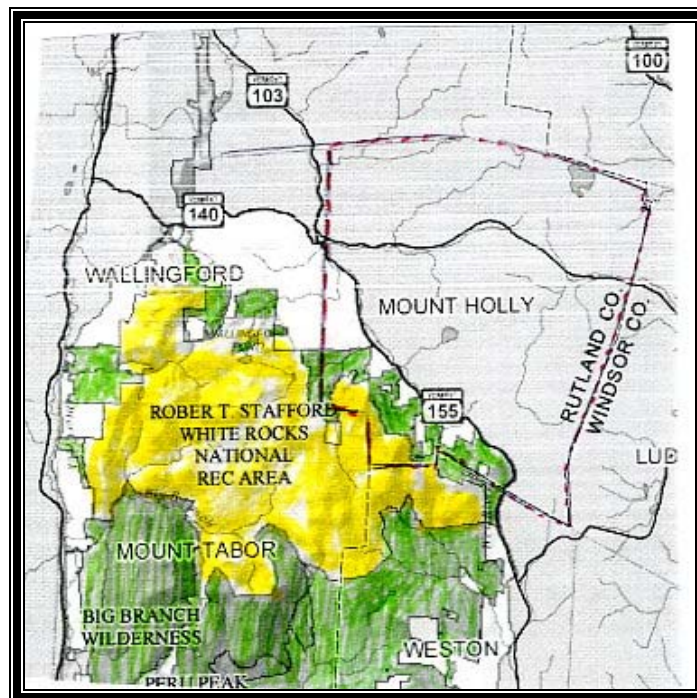
**SNOW MOBILE TRAILS – VERMONT ASSOCIATION OF SNOW TRAVELERS**  
 Maintained by local chapter of VAST – the Mount Holly Sno Drifters

Map VII 1

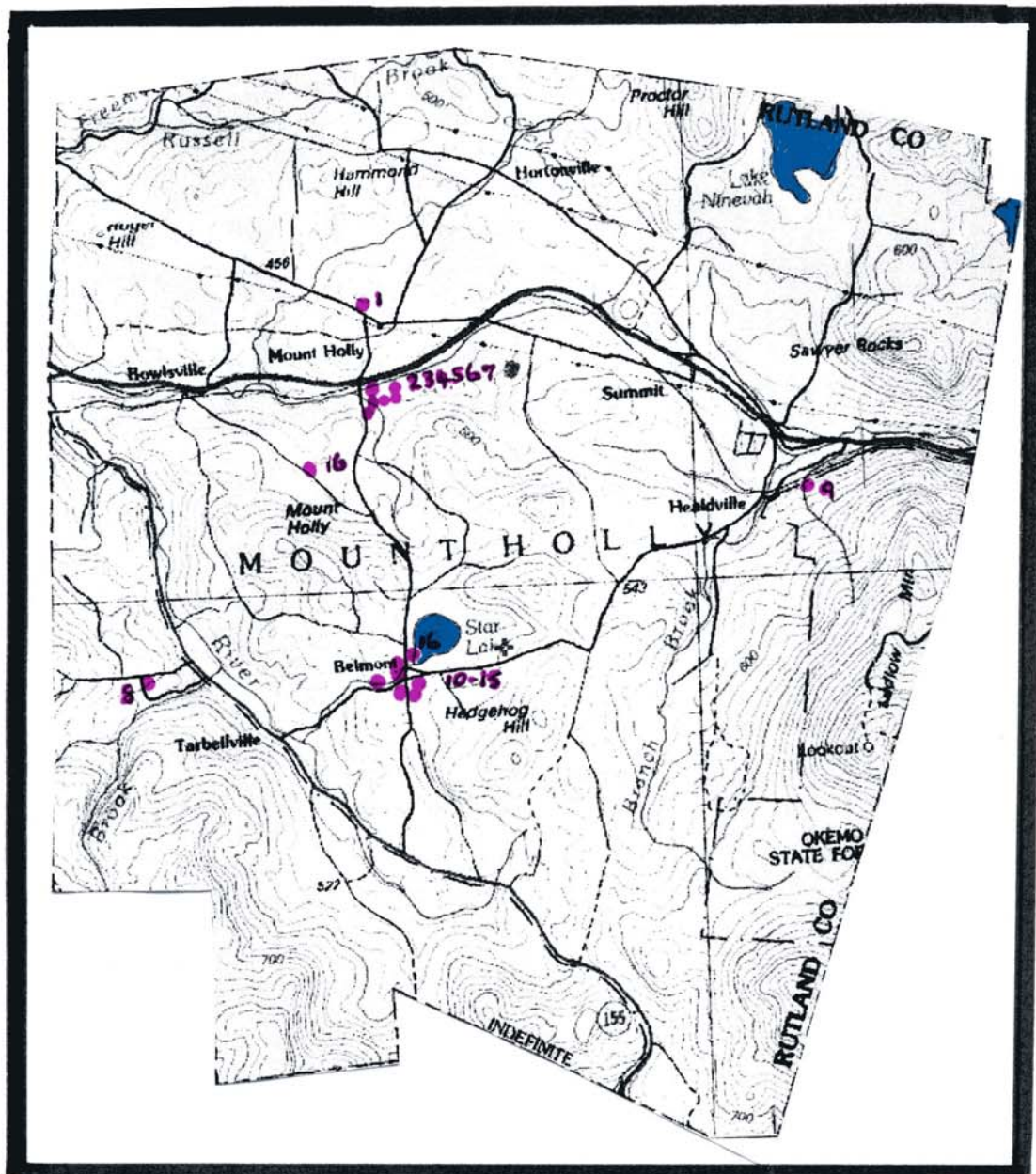


Map VII 2

**CATAMOUNT CROSS-COUNTRY SKI TRAIL**



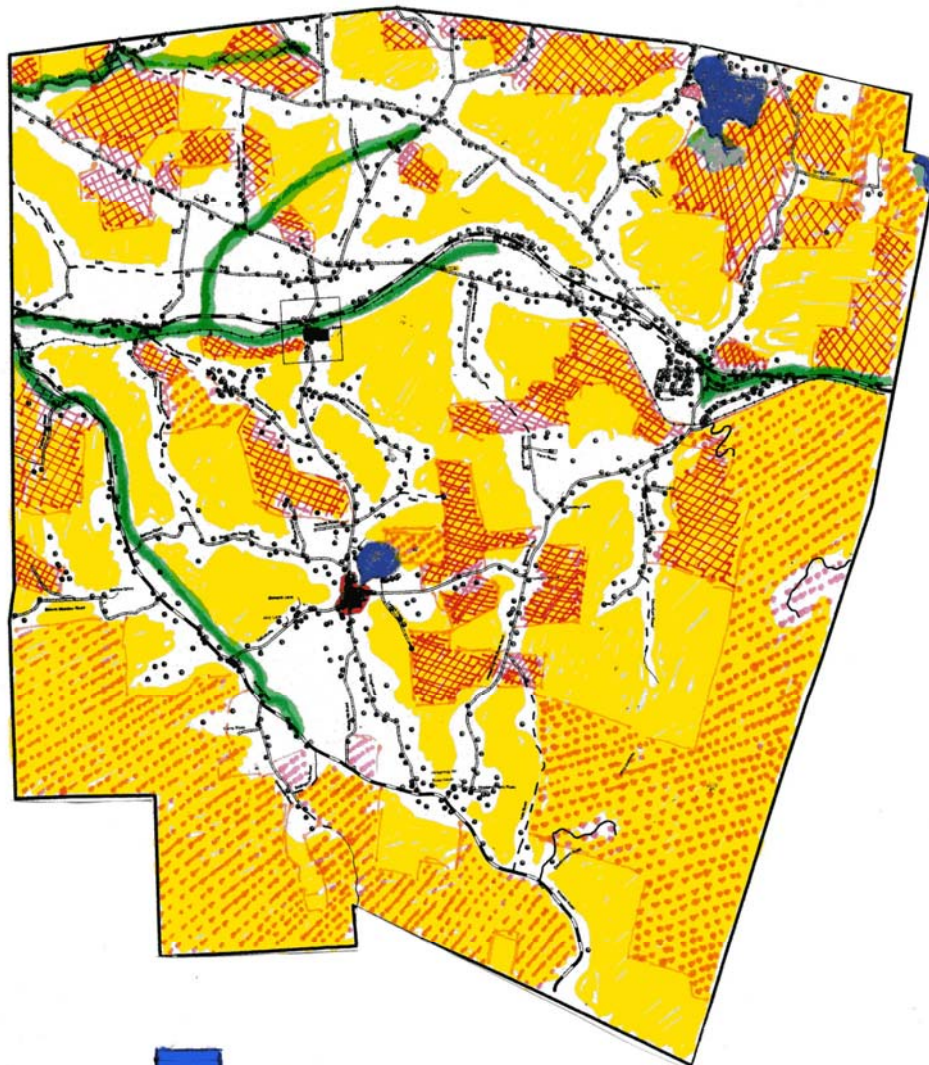




Map XII 1

### MOUNT HOLLY FACILITIES

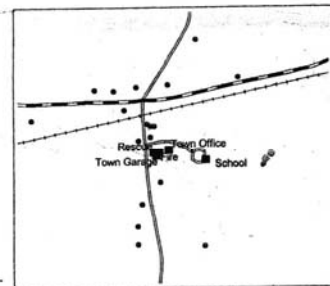
- |                                           |                                          |
|-------------------------------------------|------------------------------------------|
| 1. St. Mary's Catholic Church             | Village of Belmont                       |
| Municipal Center                          | 10. Belmont General Store                |
| 2. Mount Holly Post Office                | 11. Belmont Post Office                  |
| 3. Mount Holly Elementary School          | 12. Mt Holly Community Historical Museum |
| 4. Town Office                            | 13. Mt Holly Community Library           |
| 5. Volunteer Fire Department              | 14. Village Baptist Church               |
| 6. Volunteer Rescue Squad                 | 15. Star Lake Public Beach               |
| 7. Town Garage                            | 16. Transfer Station                     |
| 8. Parking lot Green Mtn. National Forest | 9. Parking lot Okemo State Forest        |



### Legend

- Structures
- Town Class 2
- Town Class 3
- - - Town Class 4
- State Forest Road
- State Highway
- Private, unknown, other
- Rail
- Contiguous Forest

- Lakes
- Floodplains
- Public & Conserved Land
- Agriculture & Managed Forest Land Use Value Program
- Designated Village Center – Belmont
- Municipal Center



## MOUNT HOLLY FUTURE LAND USE